

# Barudan

HIGH SPEED AUTOMATIC EMBROIDERY MACHINE

MODEL **BEXH**  
**BESRH**

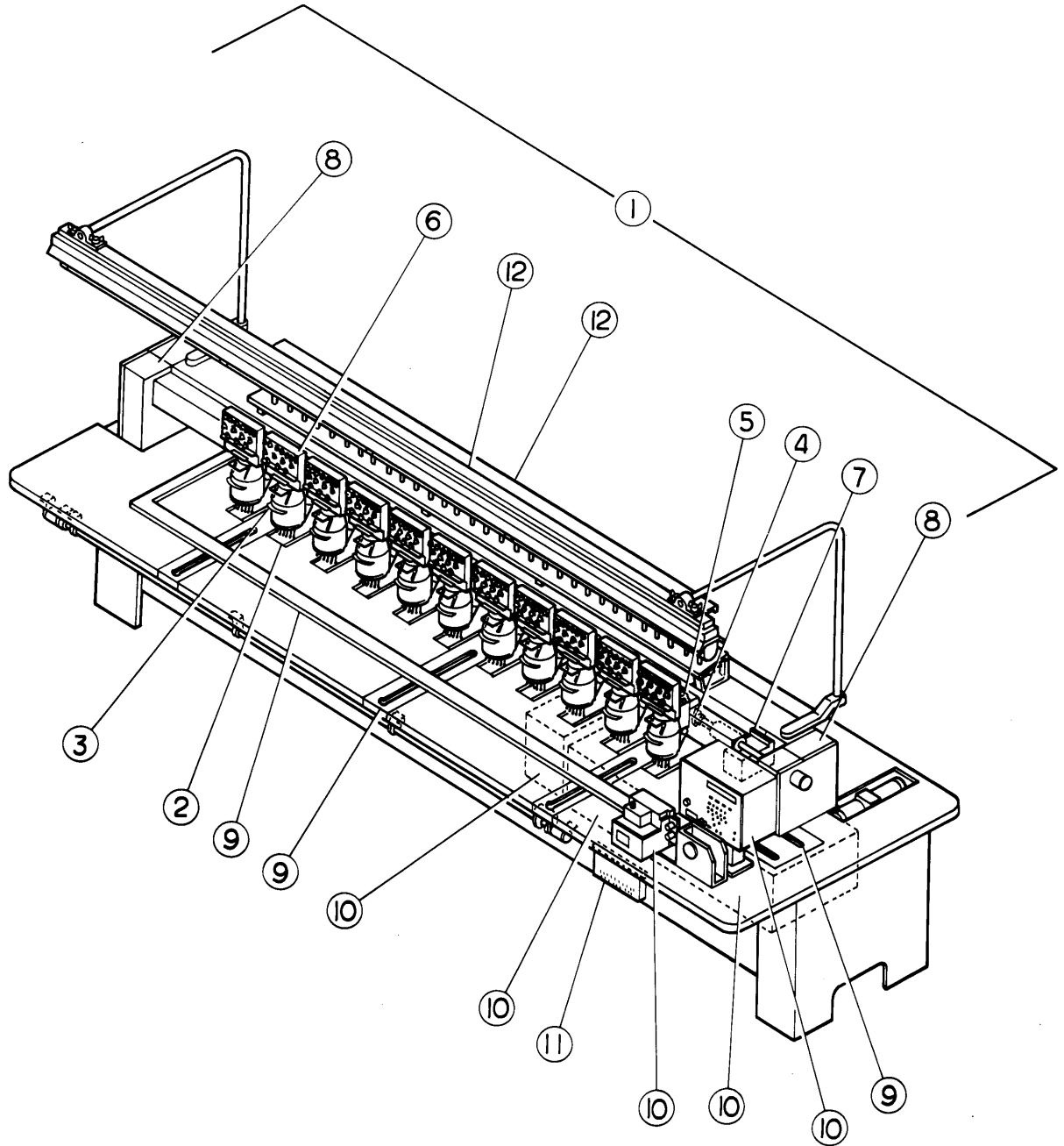
**PARTS BOOK**

**BARUDAN CO., LTD.**

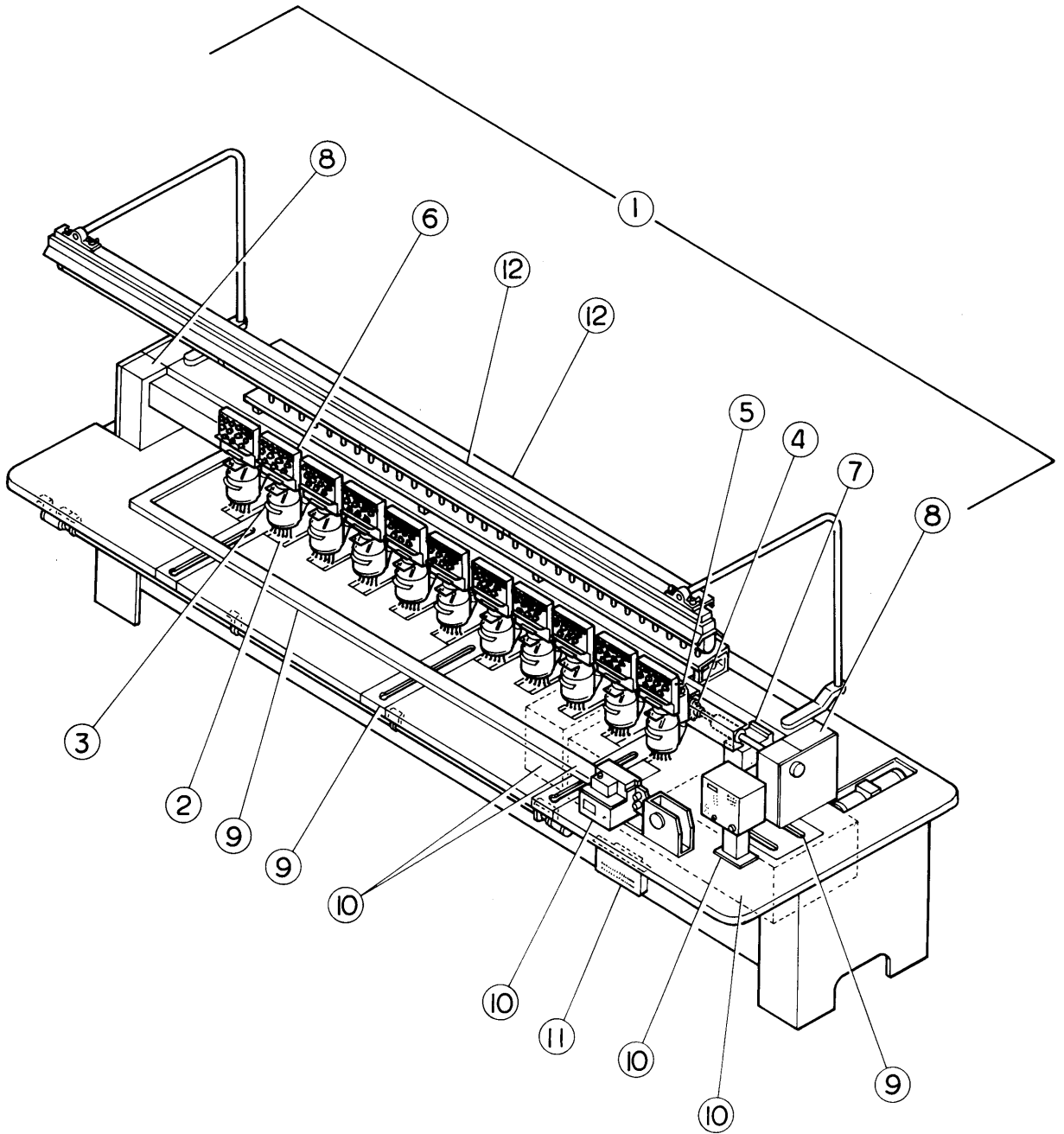
ADDRESS 20-TSUKAGOSHI, JOSUJI  
ICHINOMIYA-CITY, AICHI-PREF.  
JAPAN

TEL. (0586) 76-1137  
TELEX 4573268 BARUNA J  
CABLE BARUNA ICHINOMIYA

# ① BESRH MACHINE LAYOUT



# ① BEXH MACHINE LAYOUT



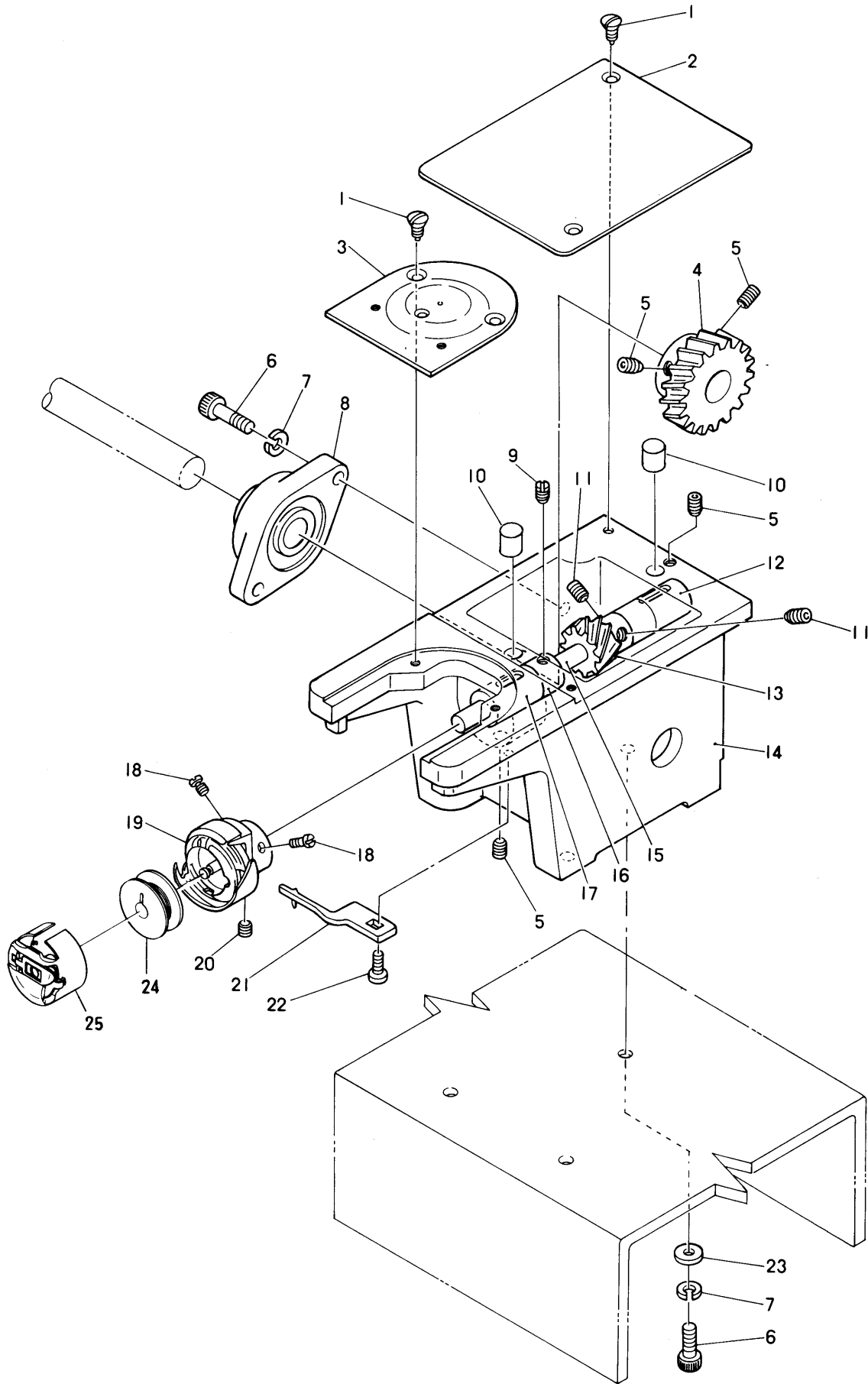
# **BEXH BESRH** COMPUTERIZED EMBROIDERY MACHINE PARTS LIST

## INDEX

	PAGE NO.
① MACHINE LAYOUT	
1. ② SEWING HEAD BASE.....	1~ 2
2. ③ NEEDLE BAR MECHANISM I (3 NEEDLES) .....	3~ 4
3. ③ NEEDLE BAR MECHANISM II (5 NEEDLES) .....	5~ 6
4. ③ NEEDLE BAR MECHANISM III (7 NEEDLES).....	7~ 8
5. ③ TAKE UP LEVER MECHANISM I (3 NEEDLES).....	9~10
6. ③ TAKE UP LEVER MECHANISM II (5 NEEDLES) .....	11~12
7. ③ TAKE UP LEVER MECHANISM III (7 NEEDLES).....	13~14
8. ④ SEWING HEAD MECHANISM.....	15~16
9. ⑤ JUNP STITCH MECHANISM.....	17~18
10. ⑥ THREAD GUIDE MECHANISM I (3 NEEDLES).....	19~20
11. ⑥ THREAD GUIDE MECHANISM II (5 NEEDLES).....	21~22
12. ⑥ THREAD GUIDE MECHANISM III (7 NEEDLES) .....	23~24
13. ⑦ COLOR CHANGE MECHANISM I .....	25~26
14. ⑦ COLOR CHANGE MECHANISM II.....	27~28
15. ⑧ DRIVE MECHANISM I .....	29~30
16. ⑧ DRIVE MECHANISM II.....	31~32
17. ⑧ DRIVE MECHANISM III.....	33~34
18. ⑨ PANTOGRAPH DRIVE MECHANISM I.....	35~36
19. ⑨ PANTOGRAPH DRIVE MECHANISM II (V DIRECTION).....	37~38
20. ⑨ PANTOGRAPH DRIVE MECHANISM III (H DIRECTION).....	39~40
21. ⑩ CONTROL SYSTEM I (BESRH).....	41~42
22. ⑩ CONTROL SYSTEM II (BEXH) .....	43~44
23. ⑪ LINDERTHREAD STOP MOTION.....	45~46
24. ⑫ THREAD STAND, LAMP, ETC.....	47~48
25. ⑬ TRIMMING DEVICE FOR TOP & BOTTOM THREAD I (OPTION).....	49~51
26. ⑬ TRIMMING DEVICE FOR TOP & BOTTOM THREAD II (OPTION).....	52~53

## ② SEWING HEAD BASE

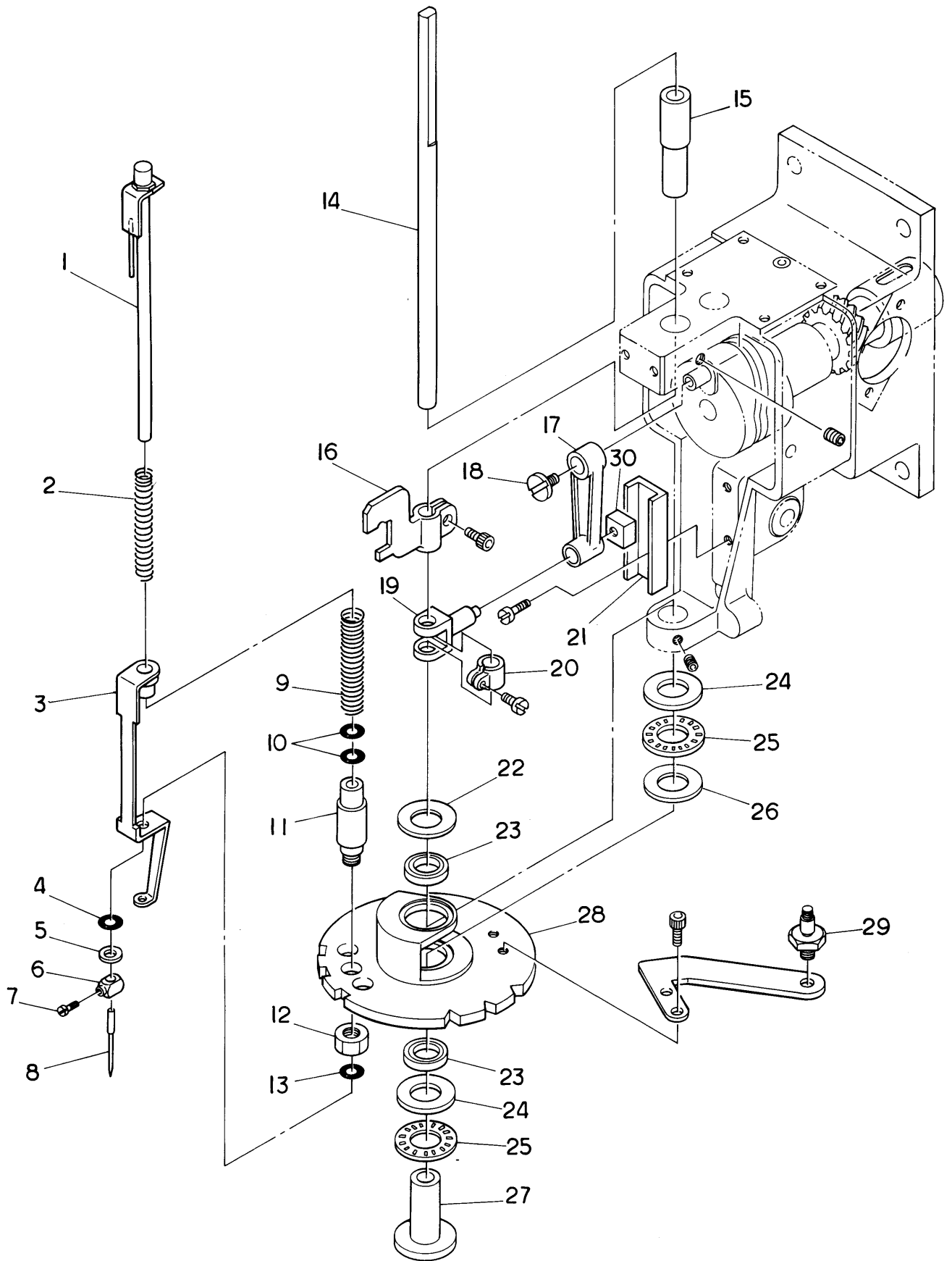
1



From the library of: Diamond Needle Corp



### ③ NEEDLE BAR MECHANISM I (3 NEEDLES)

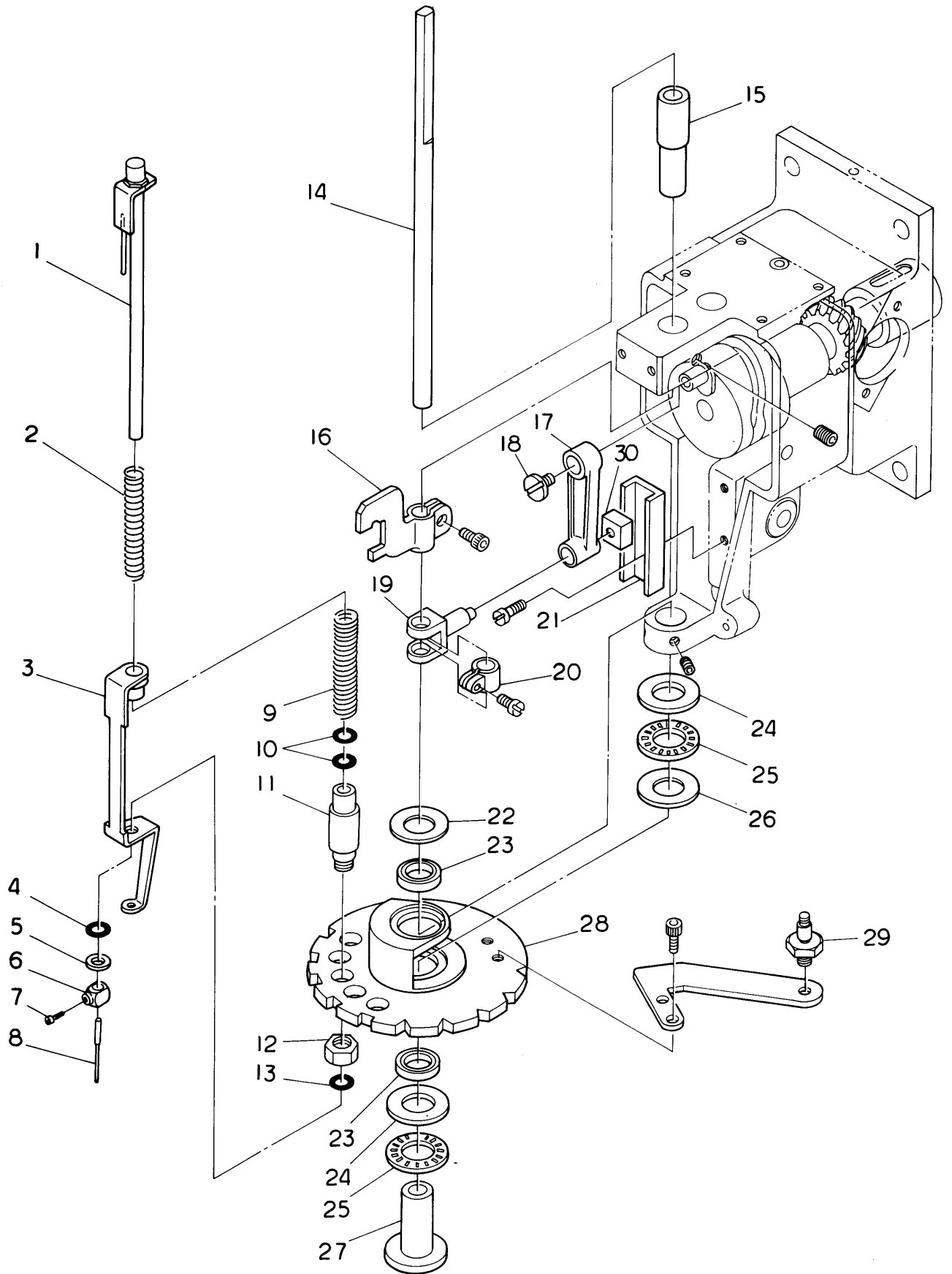


From the library of: Diamond Needle Corp





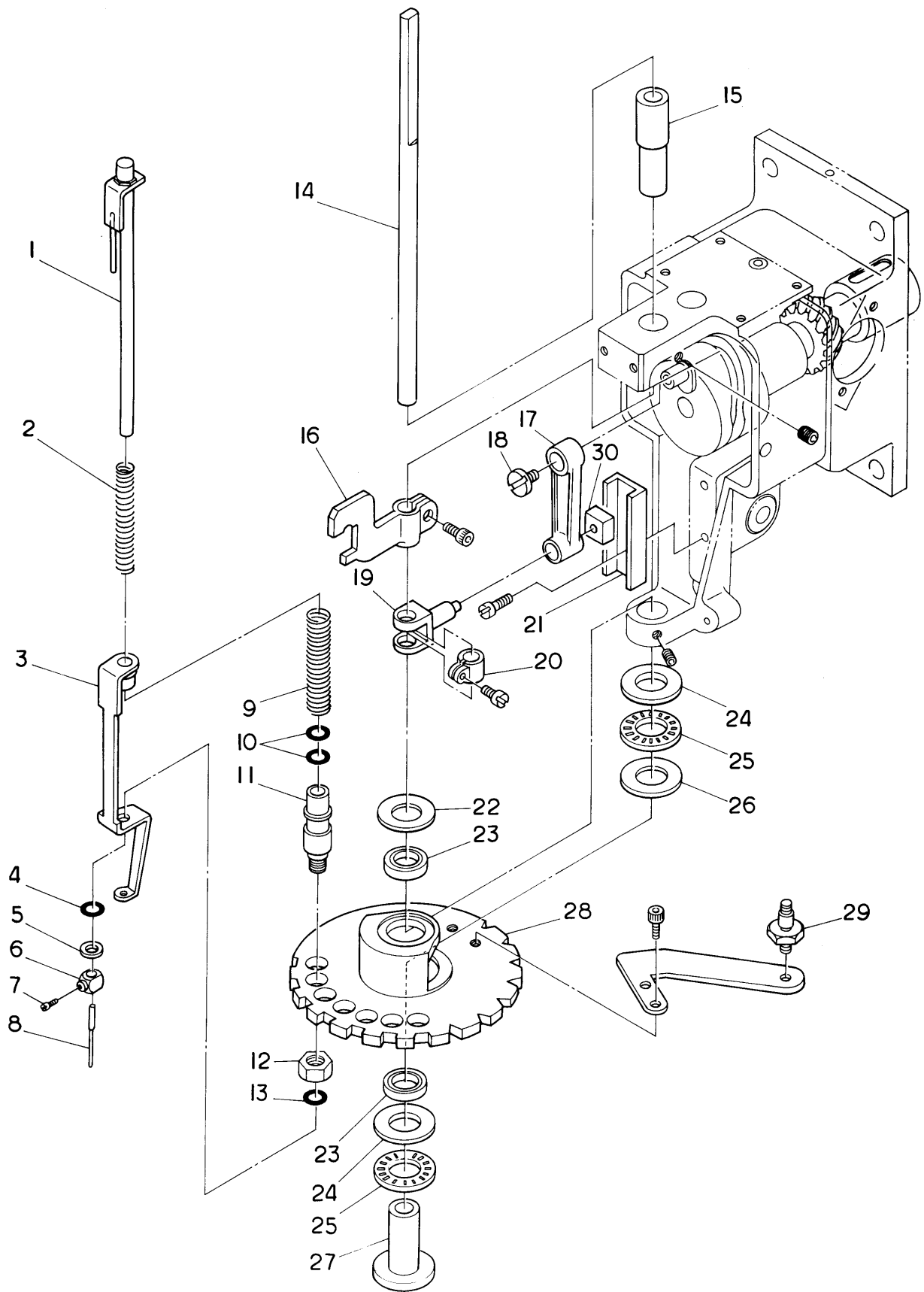
### ③ NEEDLE BAR MECHANISM II (5 NEEDLES)



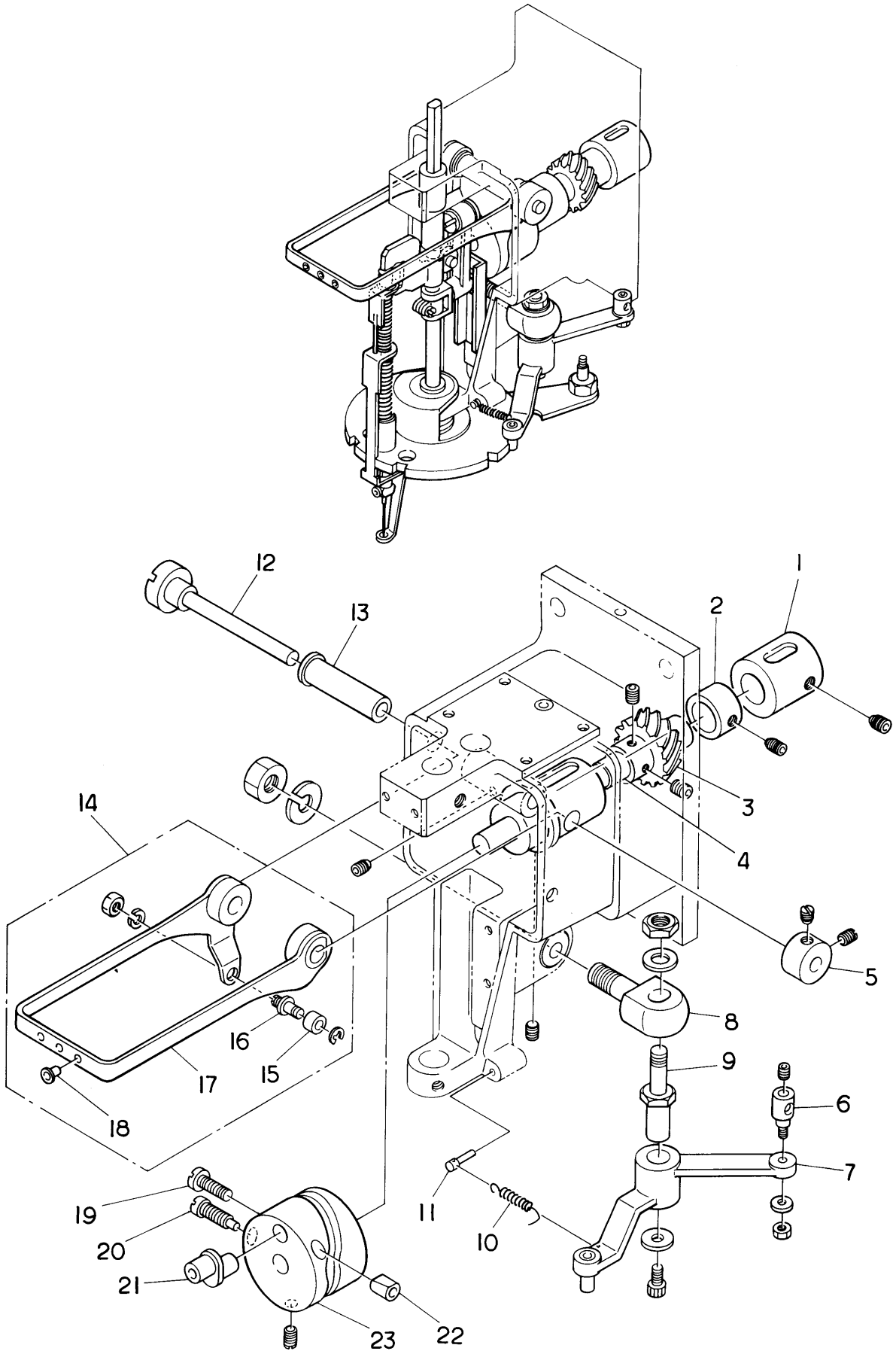
From the library of: Diamond Needle Corp



### ③ NEEDLE BAR MECHANISM III (7 NEEDLES)

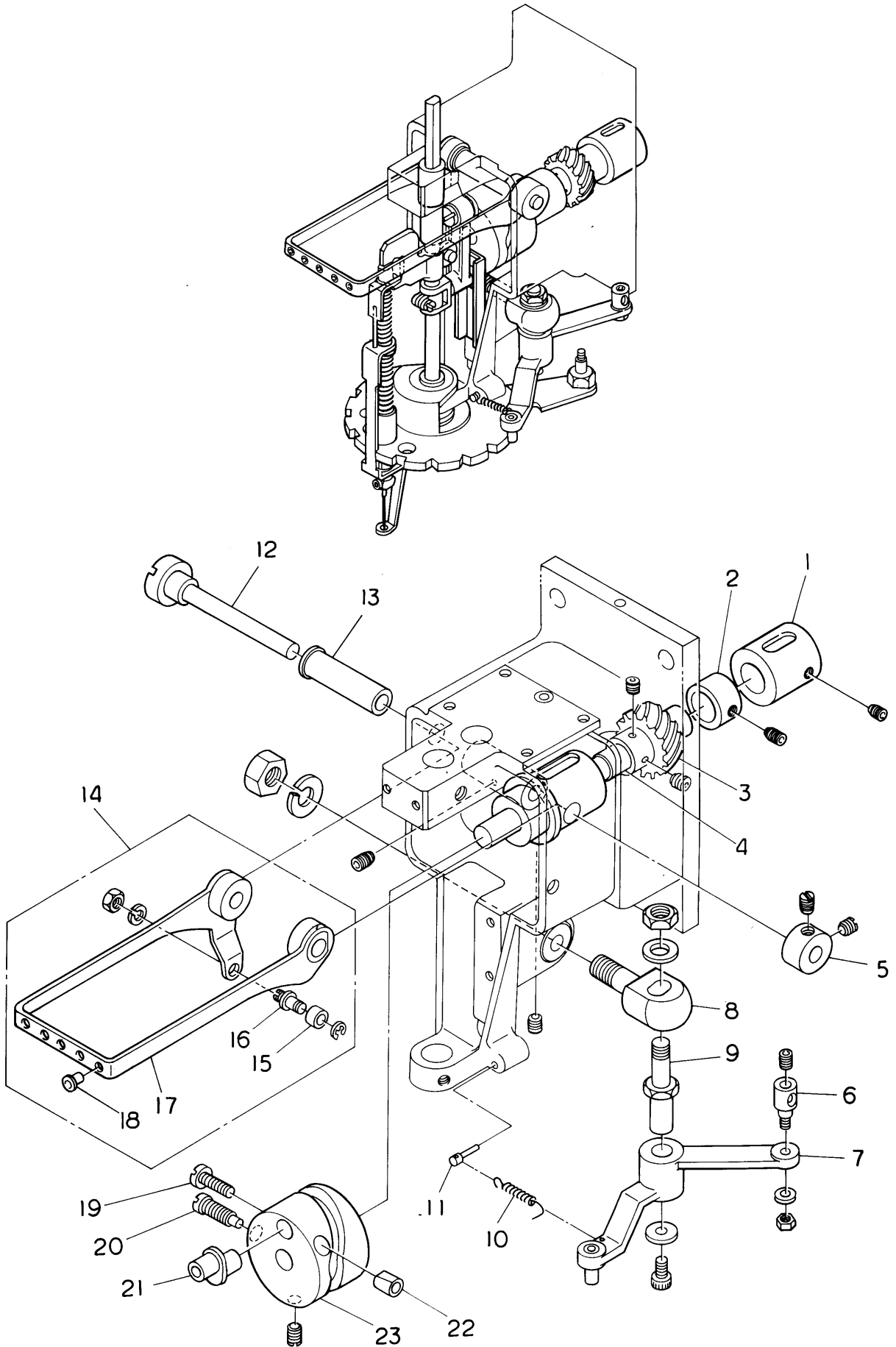








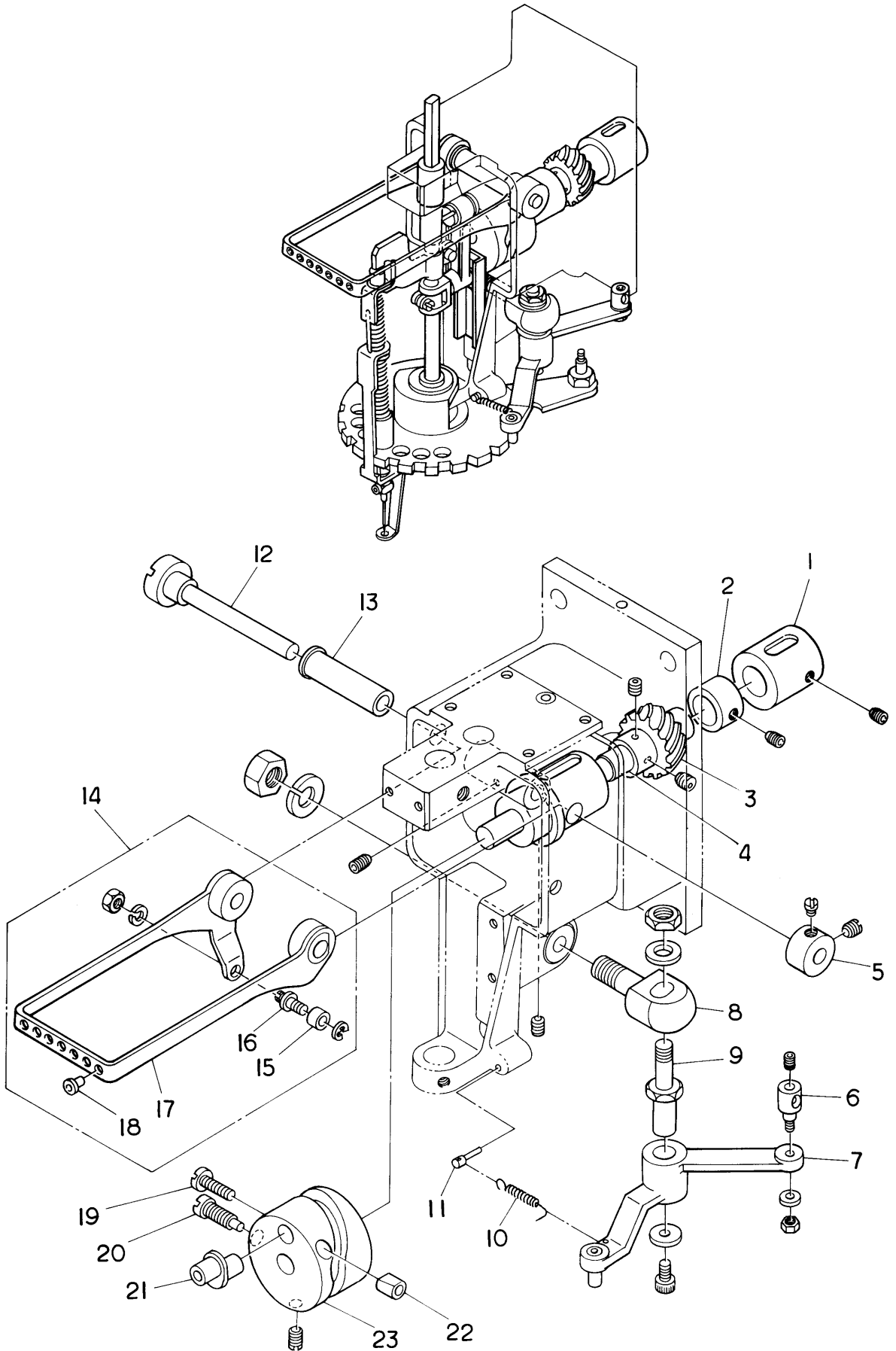
### ③ TAKE UP LEVER MECHANISM II (5 NEEDLES)



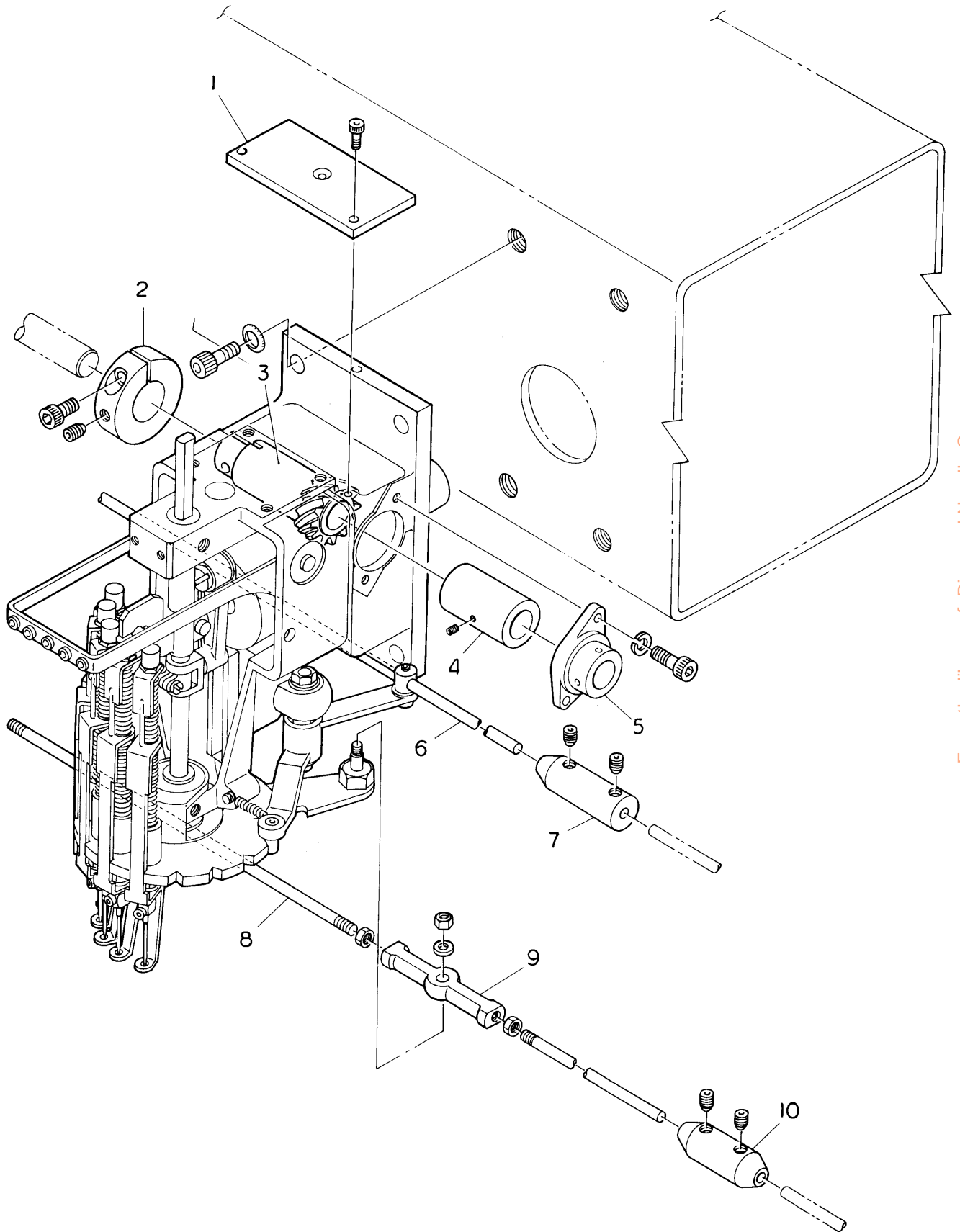




③ TAKE UP LEVER MECHANISM III (7 NEEDLES)



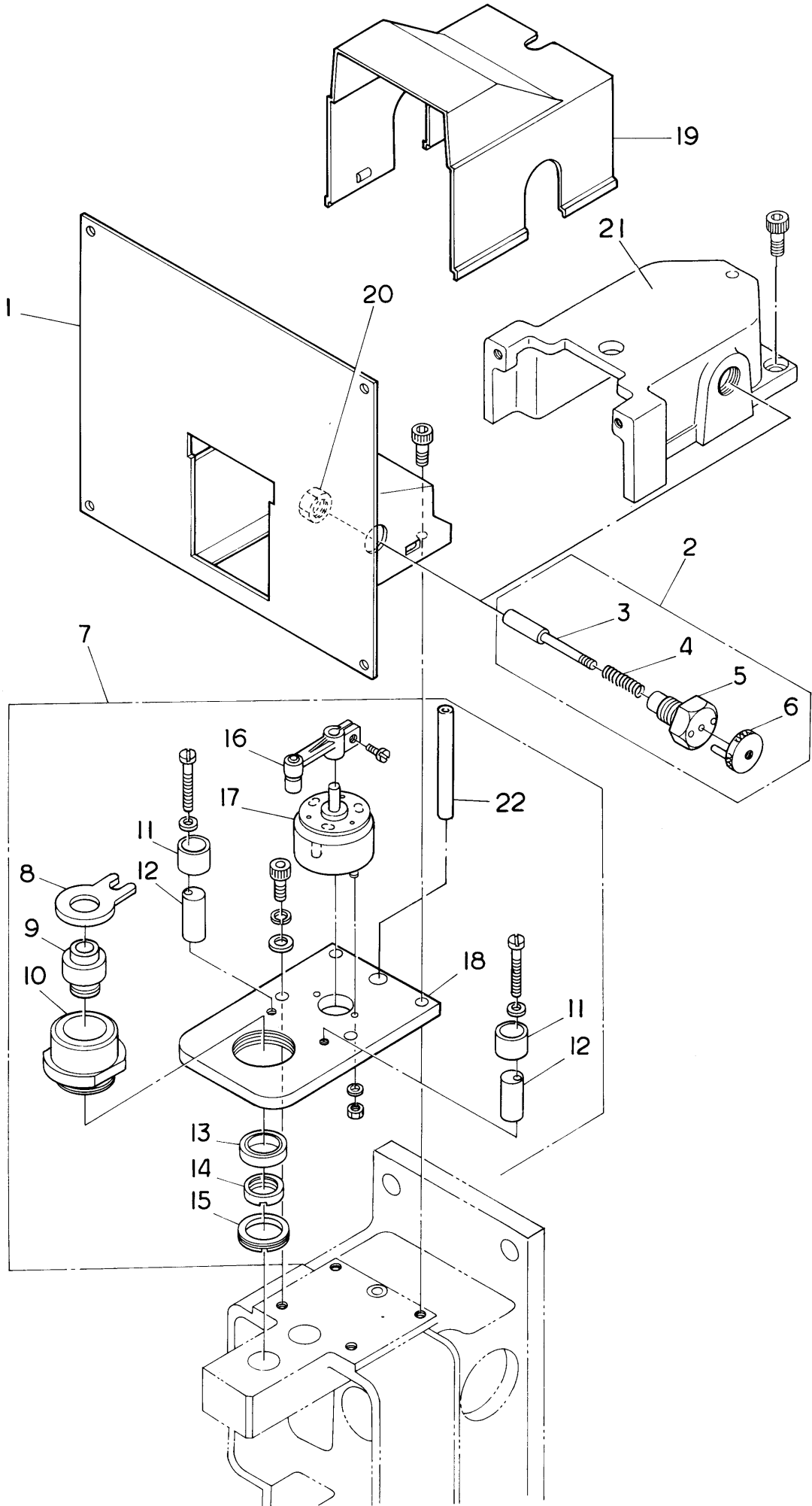




From the library of: Diamond Needle Corp



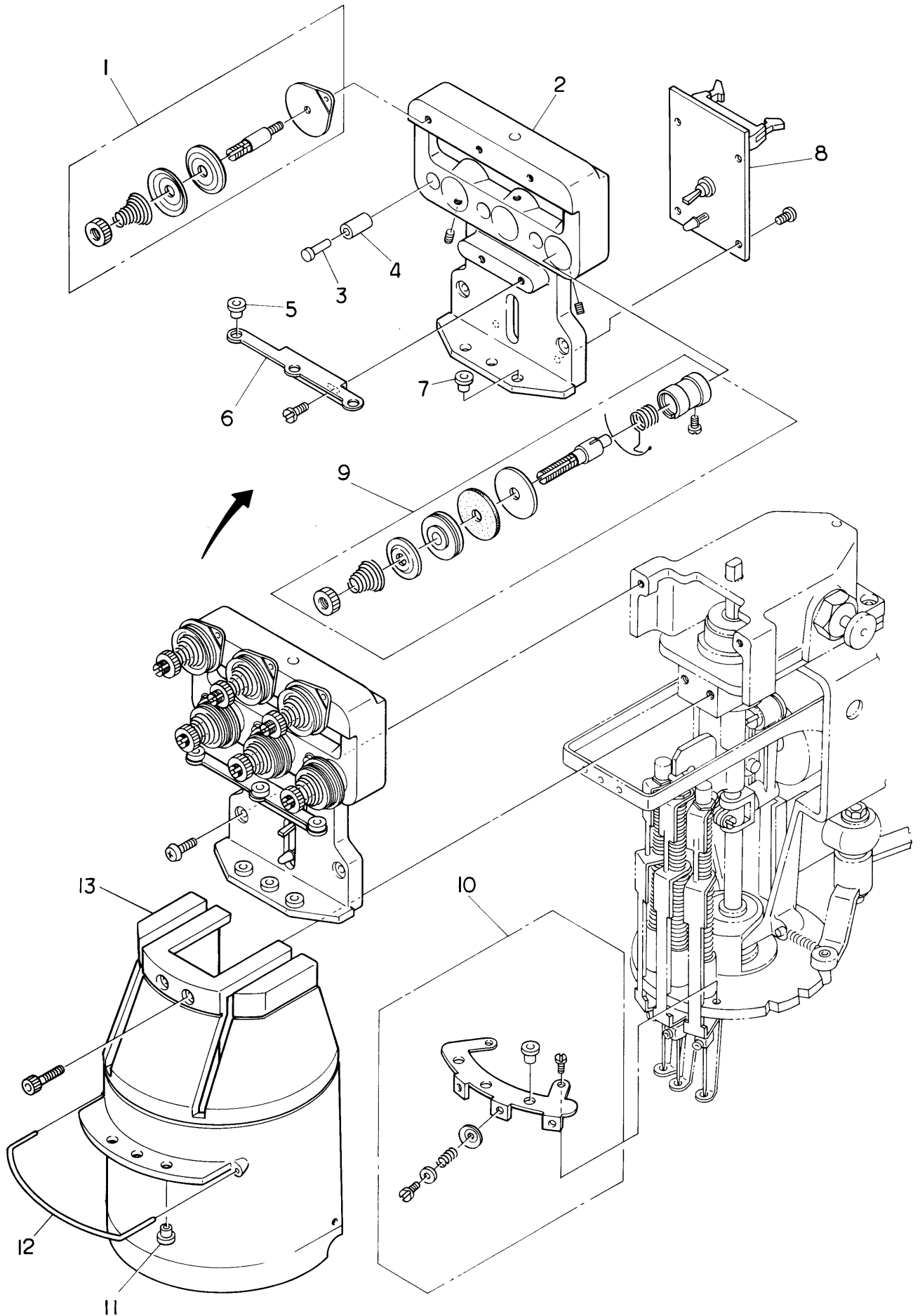
# ⑤ JUMP STITCH MECHANISM



From the library of: Diamond Needle Corp



# ⑥ THREAD GUIDE MECHANISM I (3 NEEDLES)

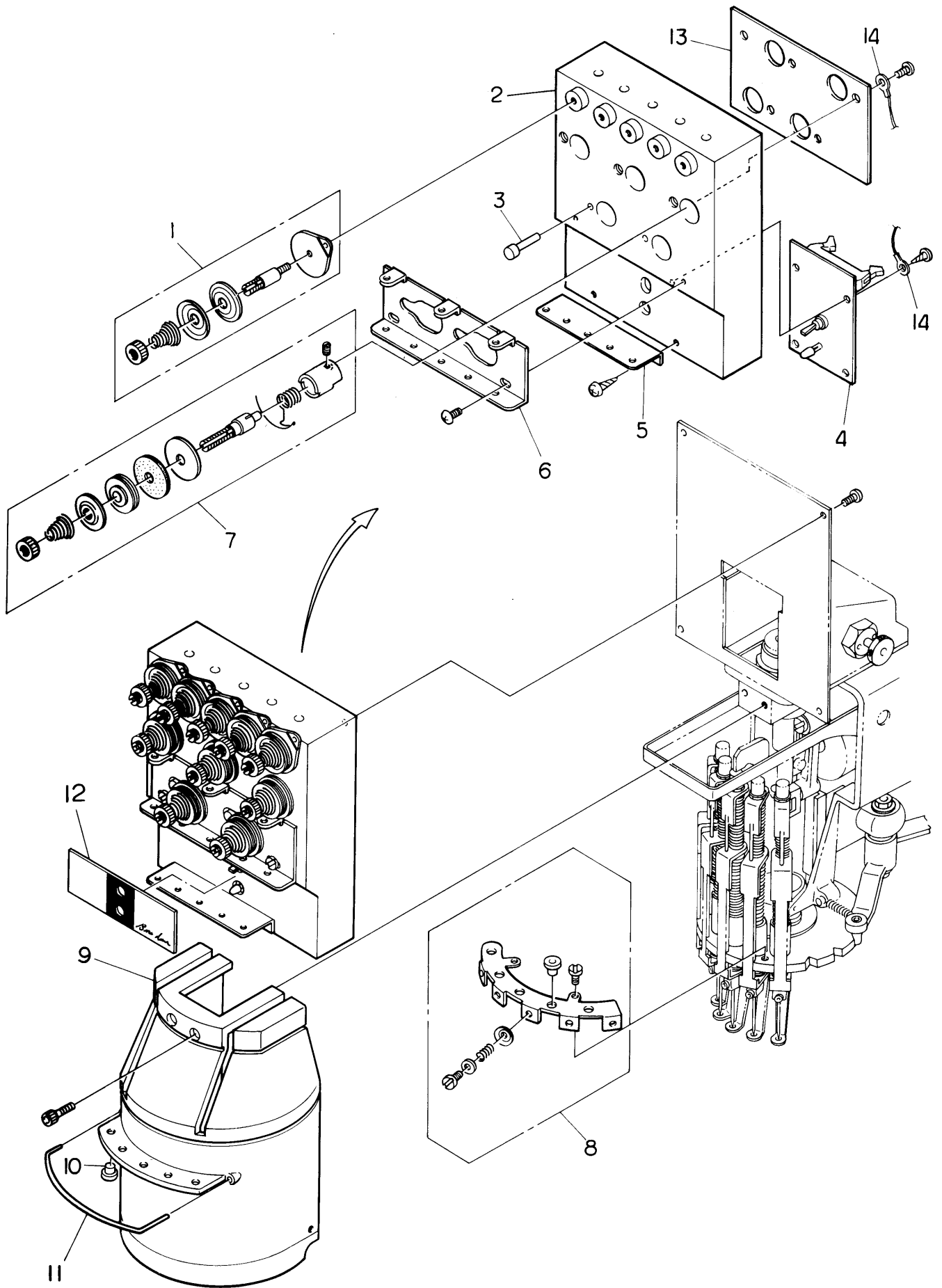


From the library of: Diamond Needle Corp





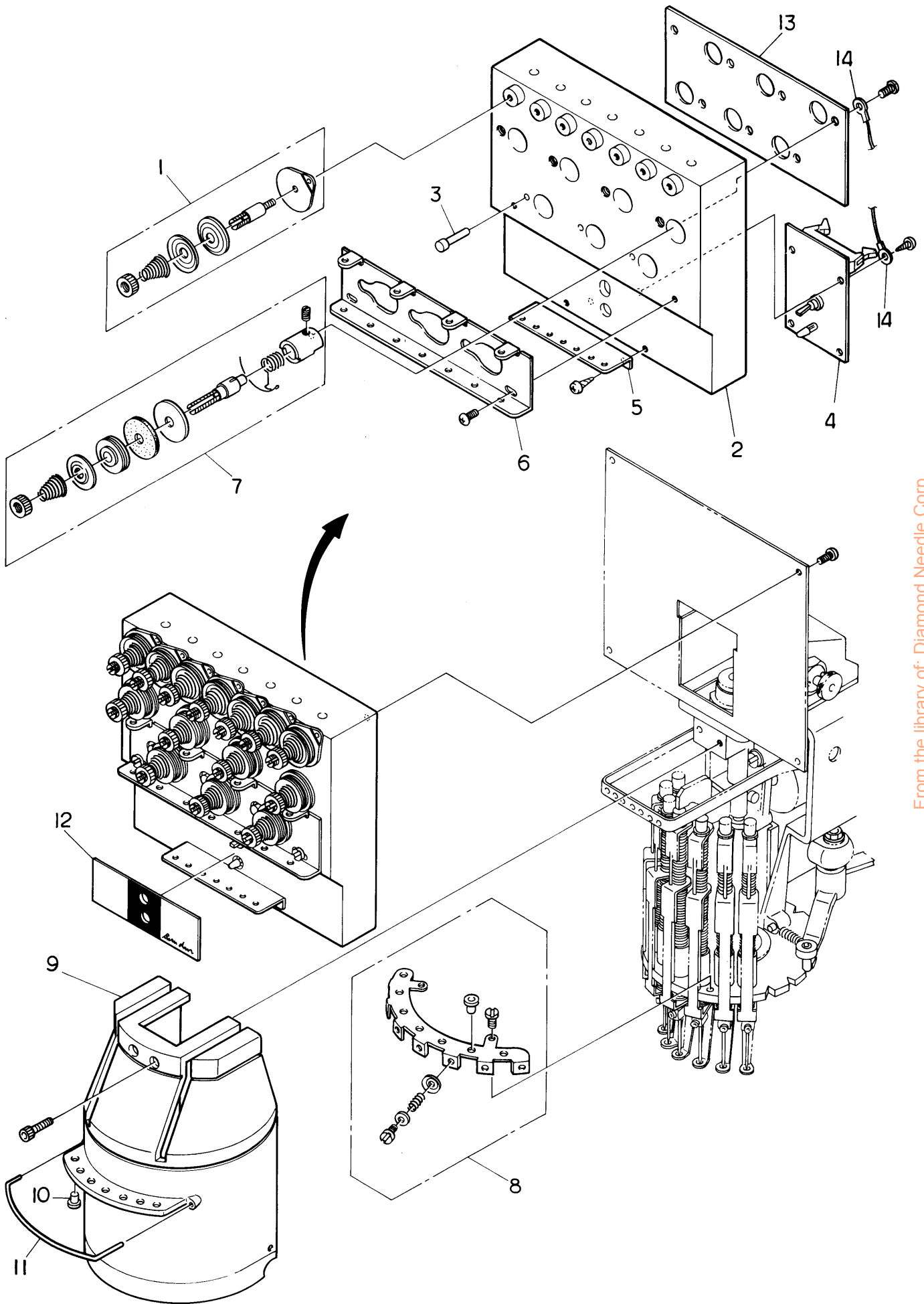
# ⑥ THREAD GUIDE MECHANISM II (5 NEEDLES)



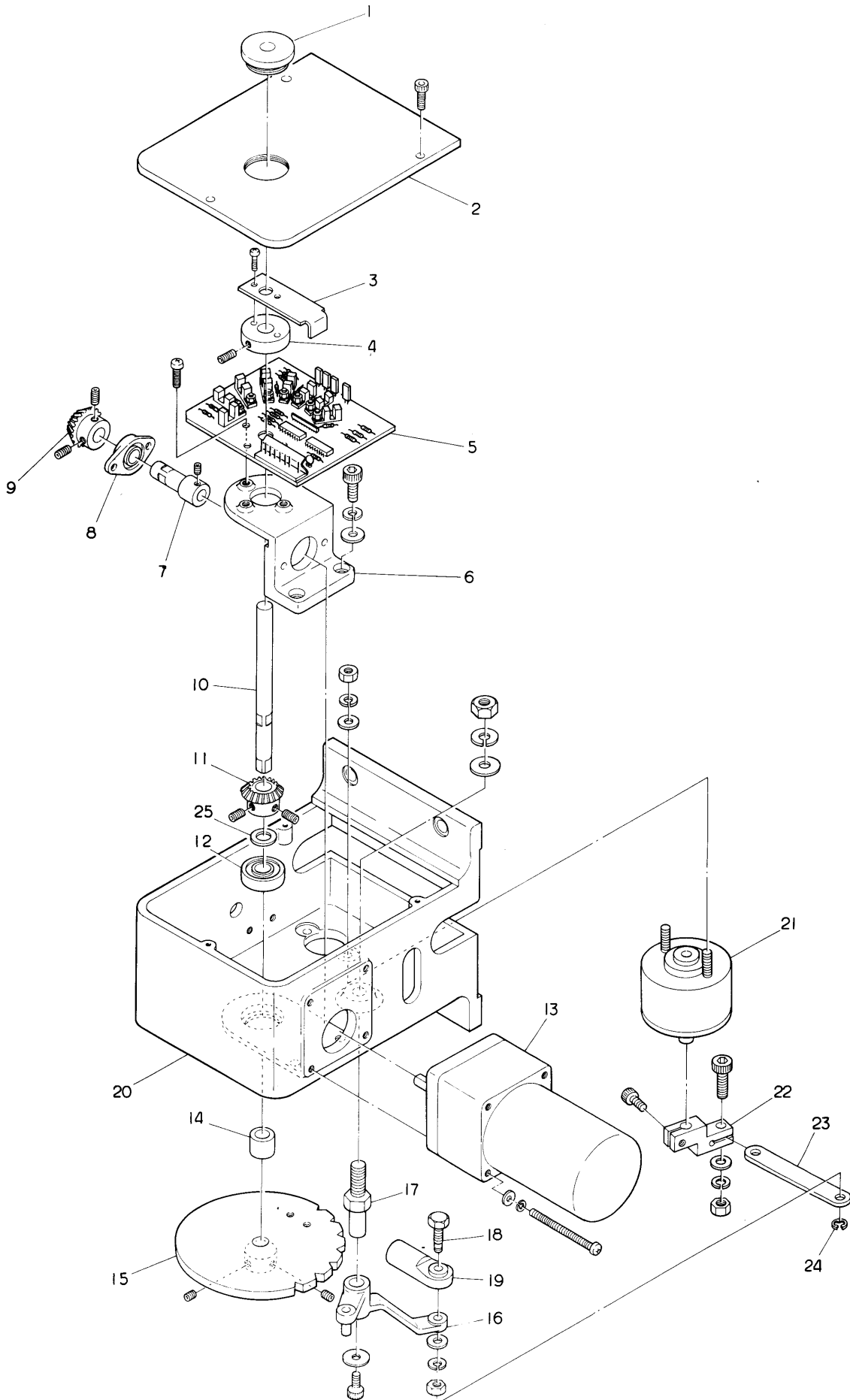
From the library of: Diamond Needle Corp



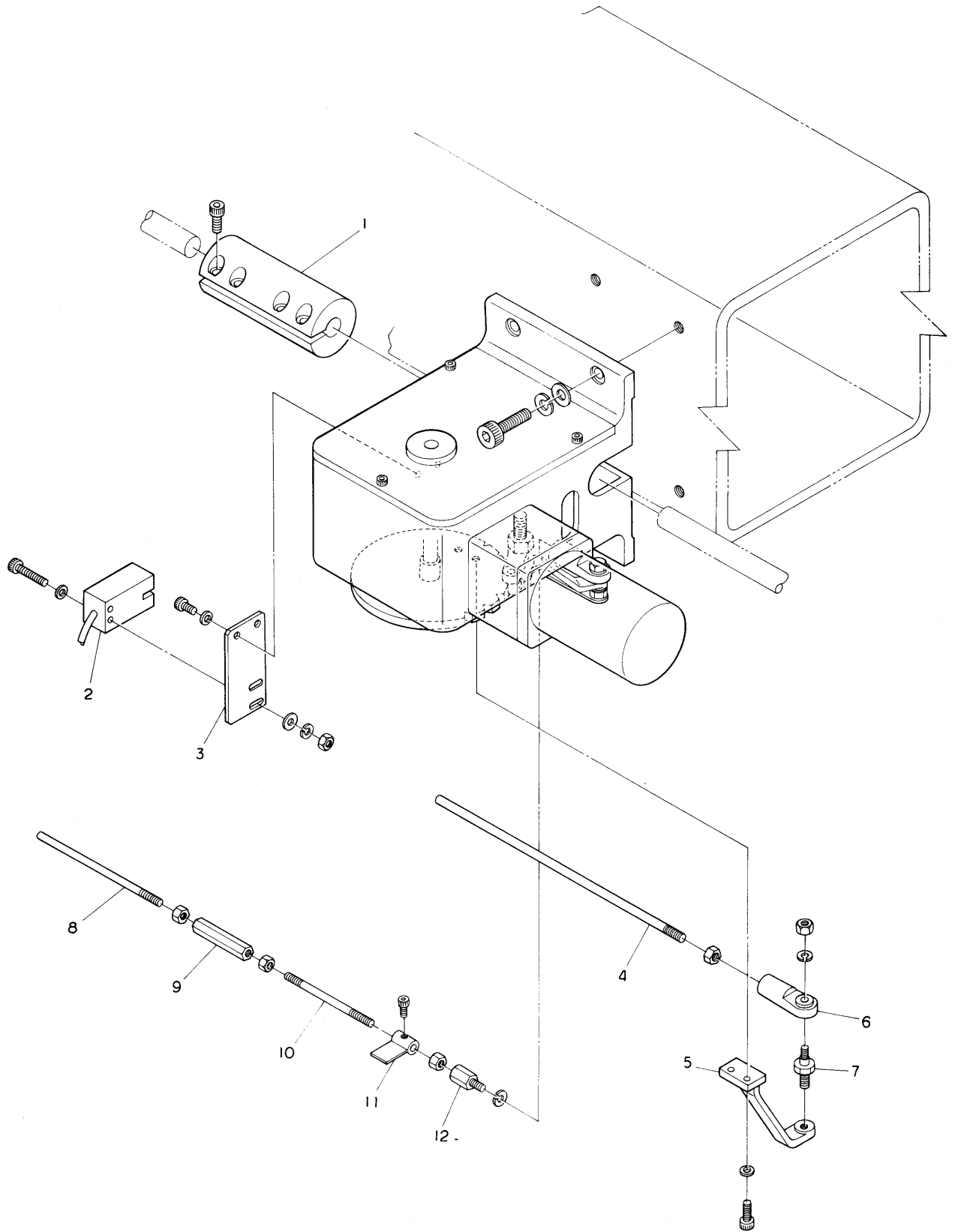
⑥ THREAD GUIDE MECHANISM III (7 NEEDLES)







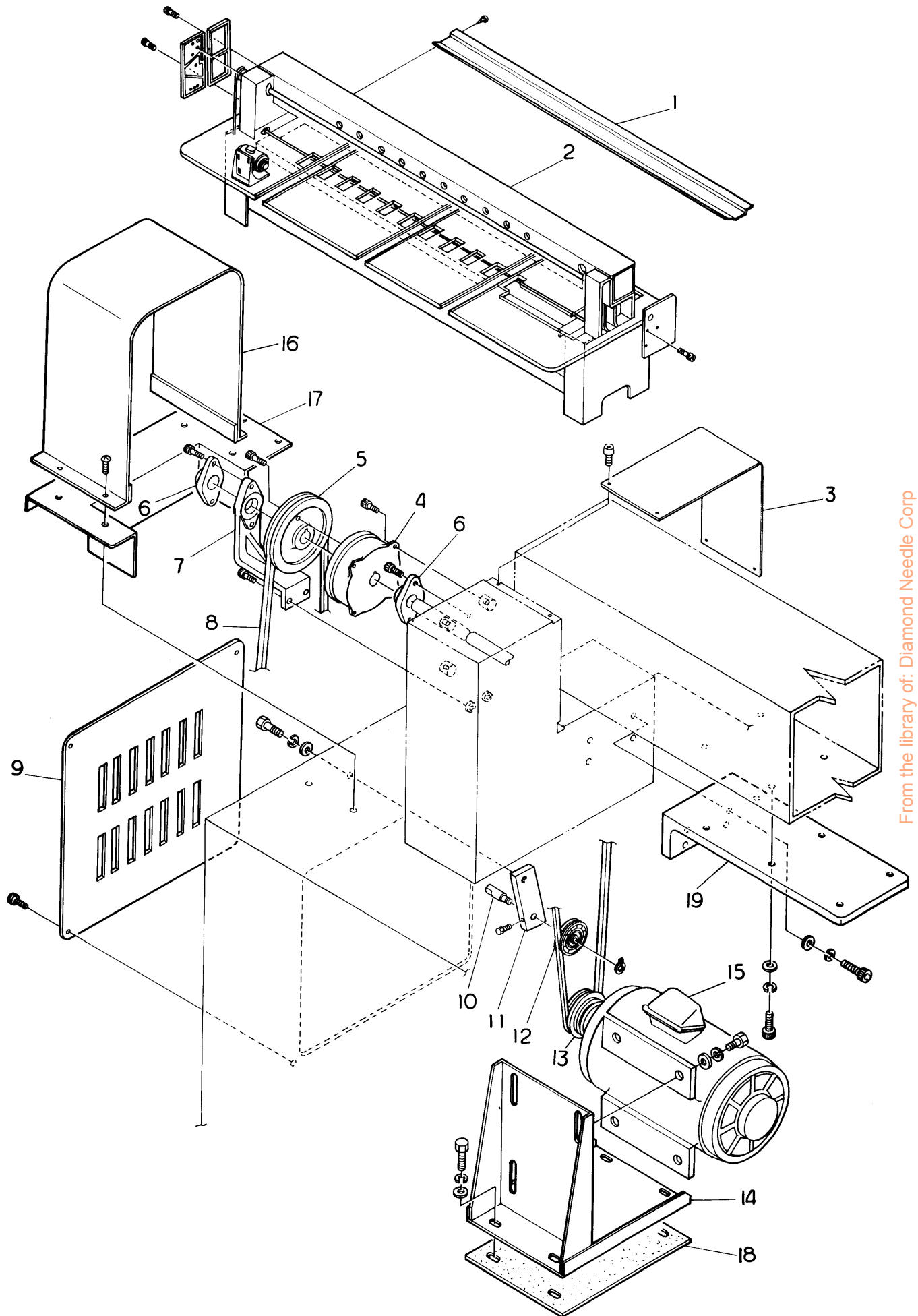






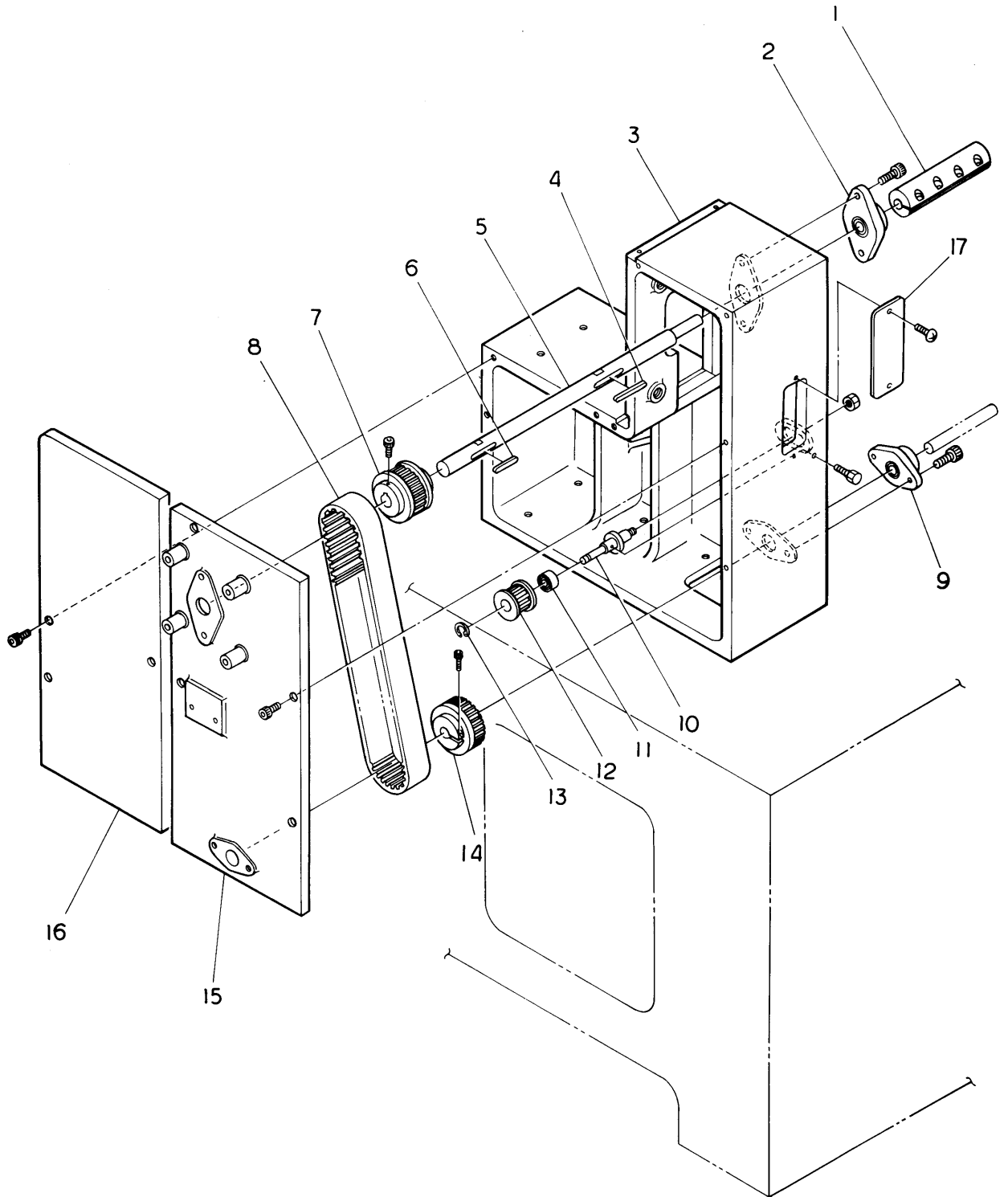


# ⑧ DRIVE MECHANISM I



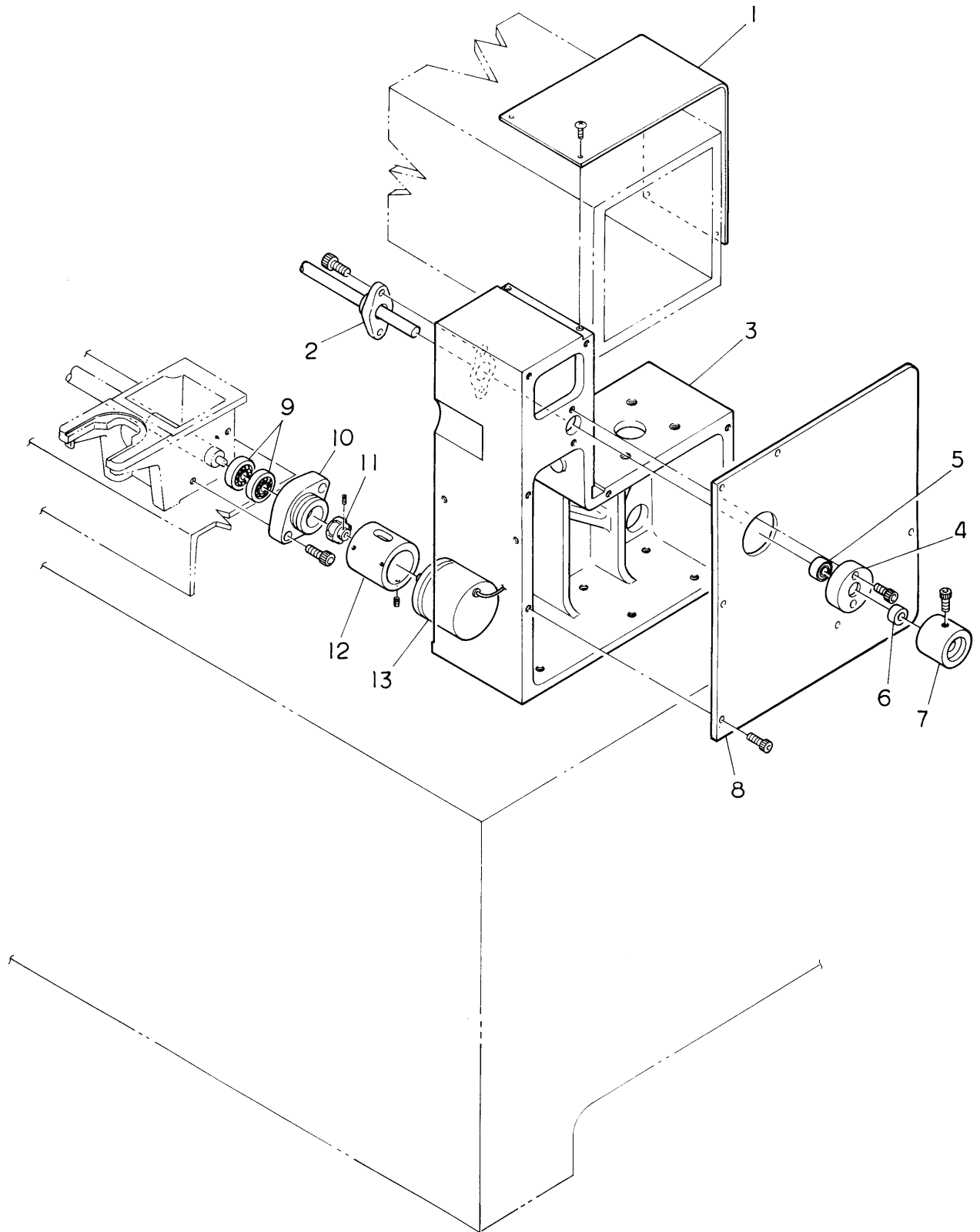
From the library of: Diamond Needle Corp





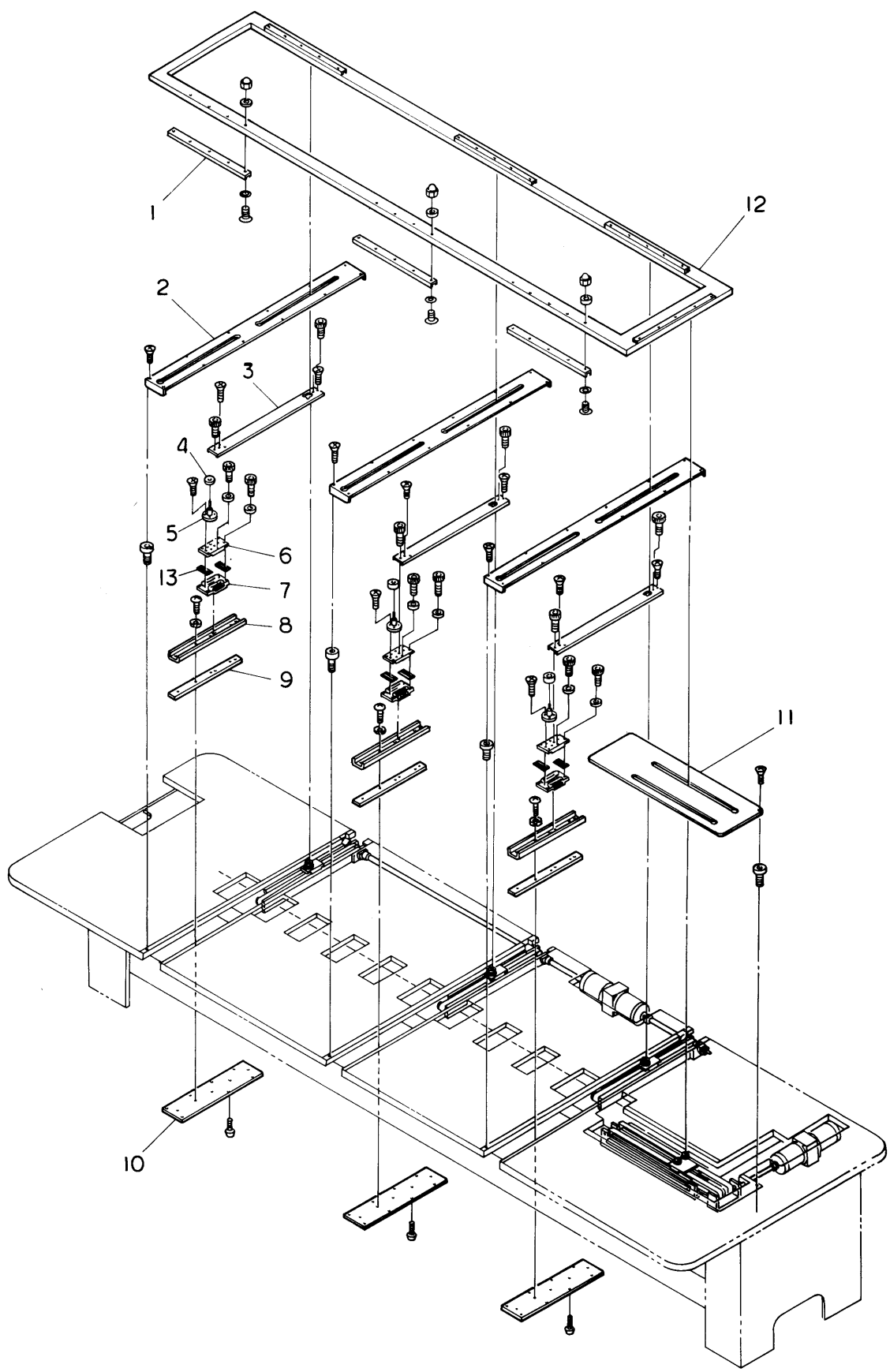
From the library of: Diamond Needle Corp





From the library of: Diamond Needle Corp



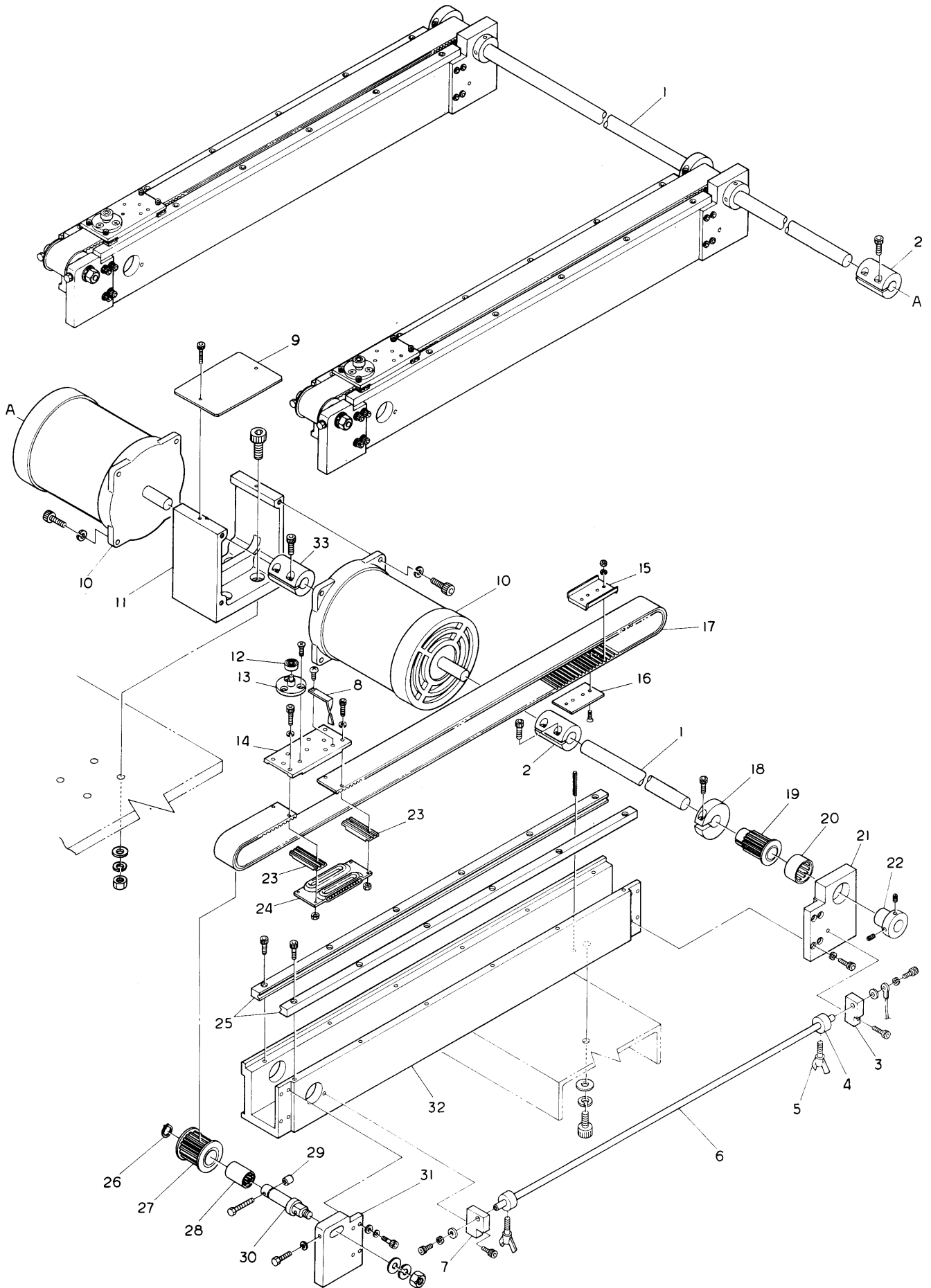


From the library of: Diamond Needle Corp





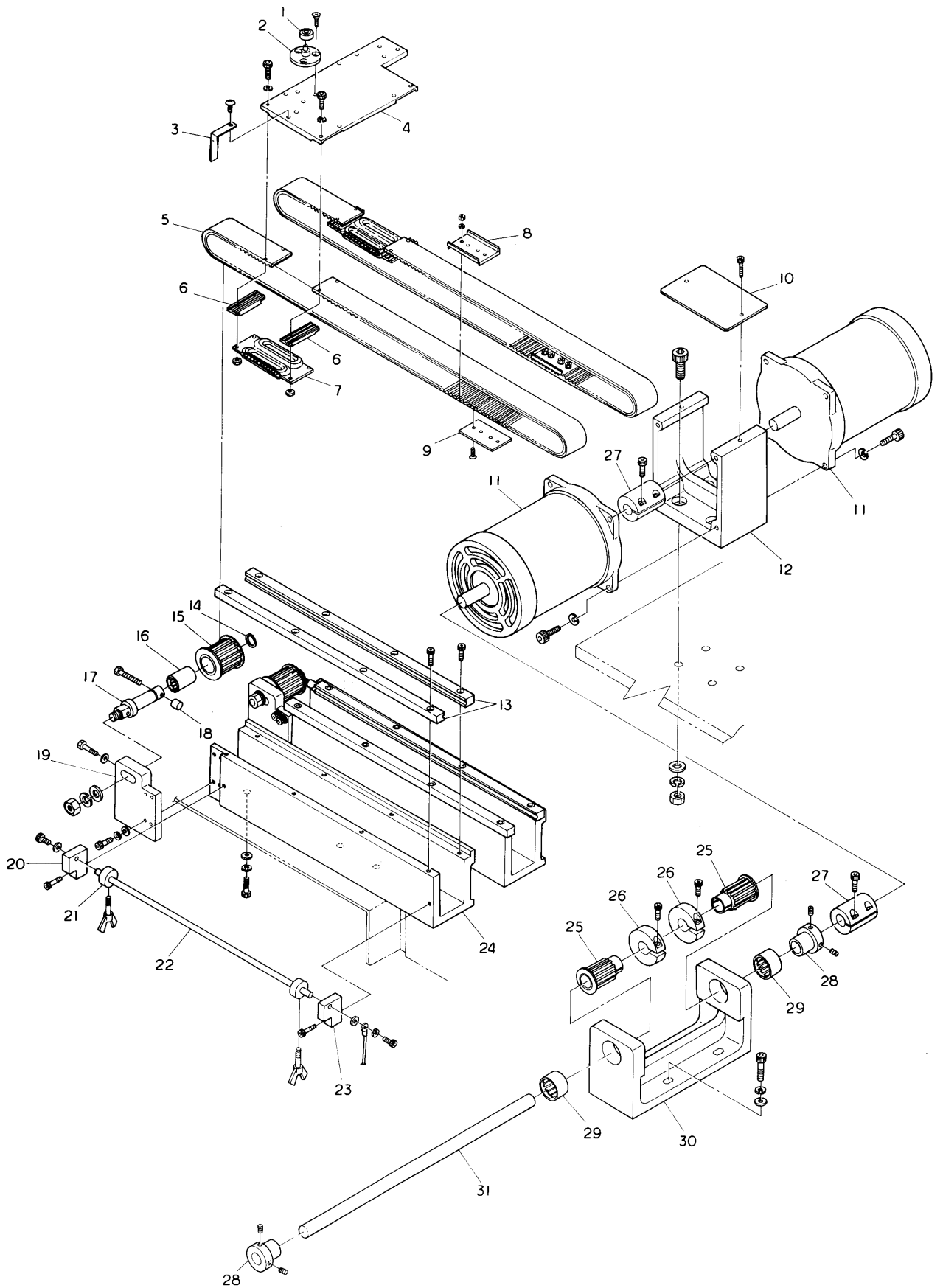
# ⑨ PANTOGRAPH DRIVE MECHANISM II (H DIRECTION)



From the library of: Diamond Needle Corp

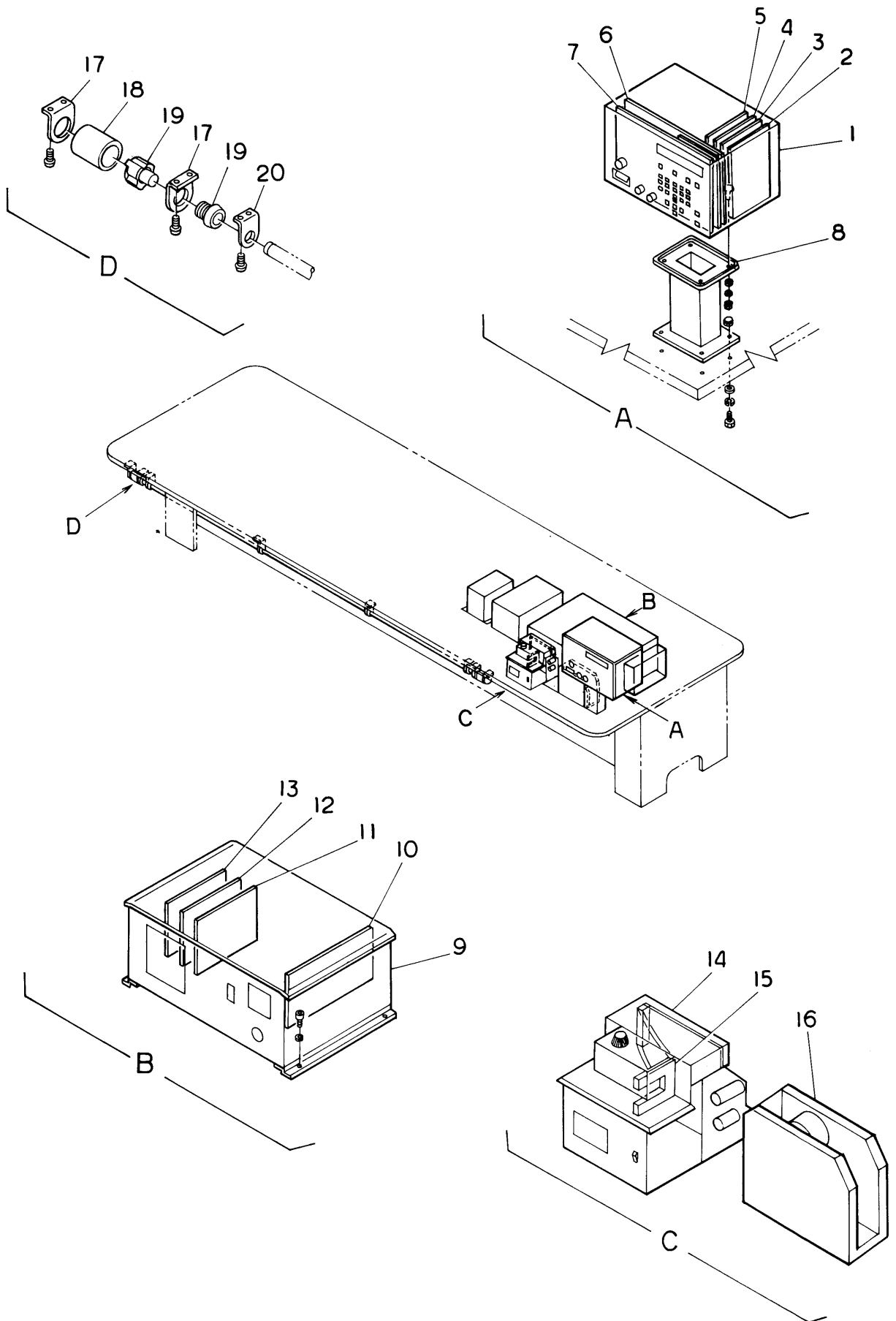


⑨ PANTOGRAPH DRIVE MECHANISM III (V EIRECTION) 20

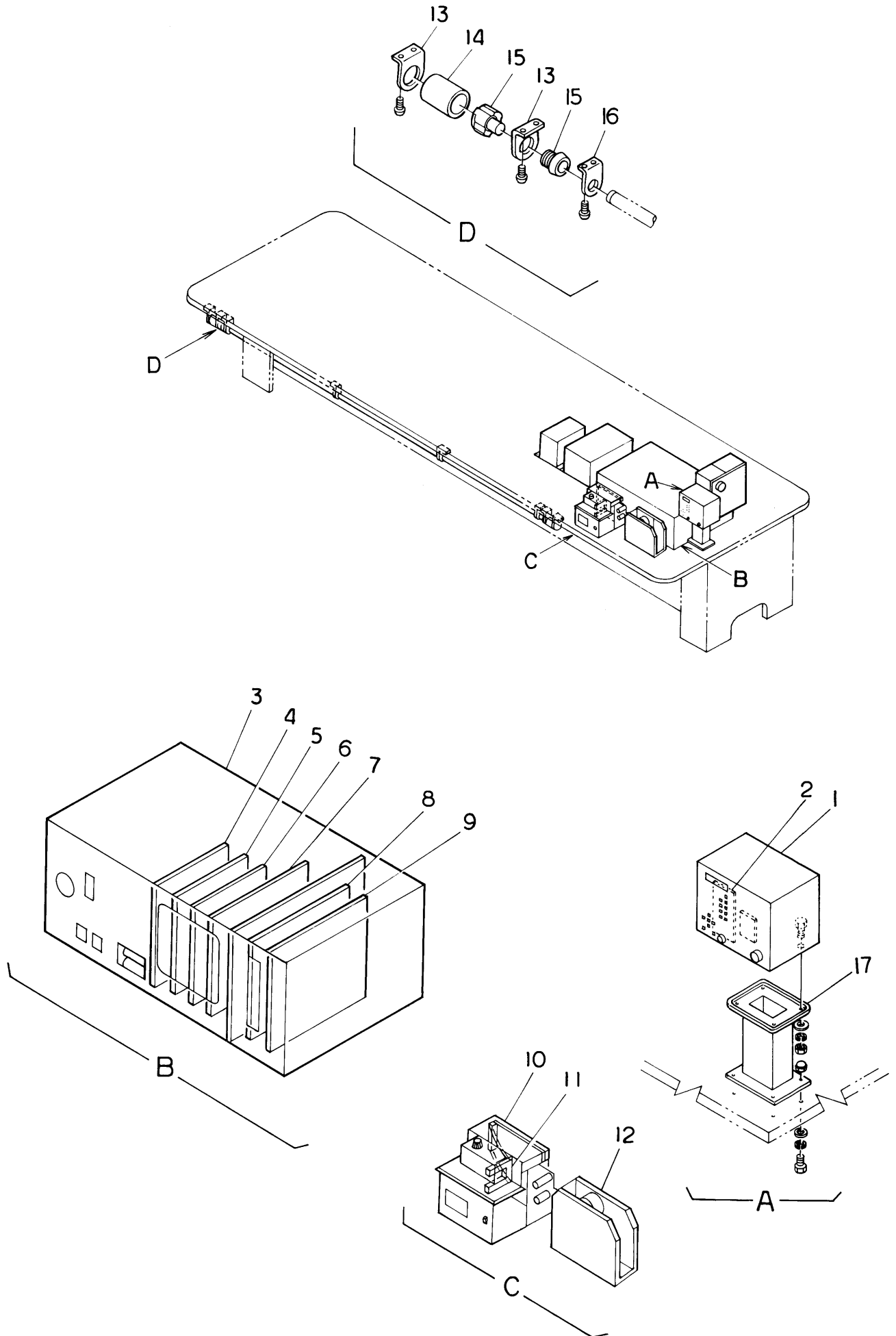


From the library of: Diamond Needle Corp





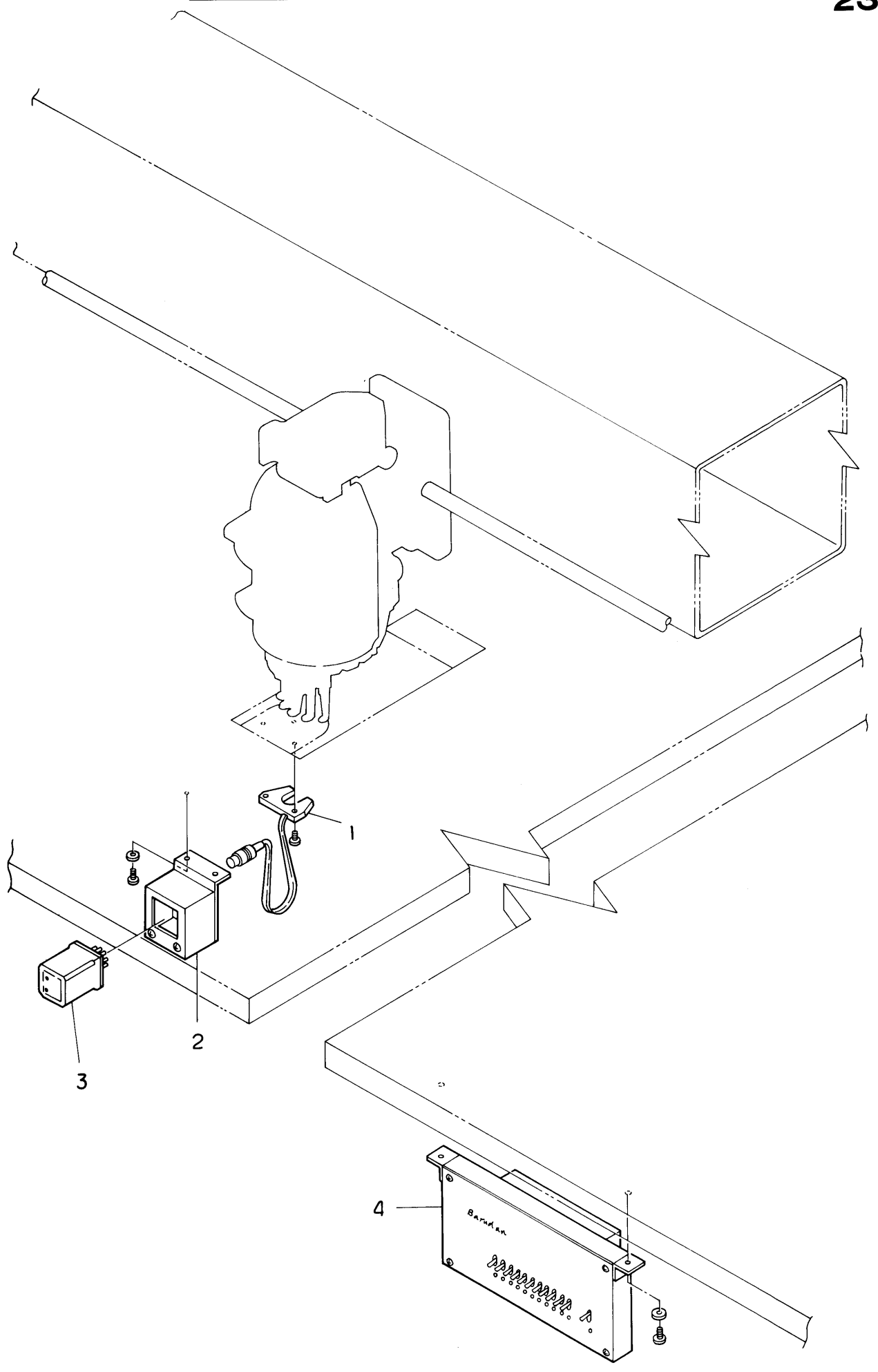






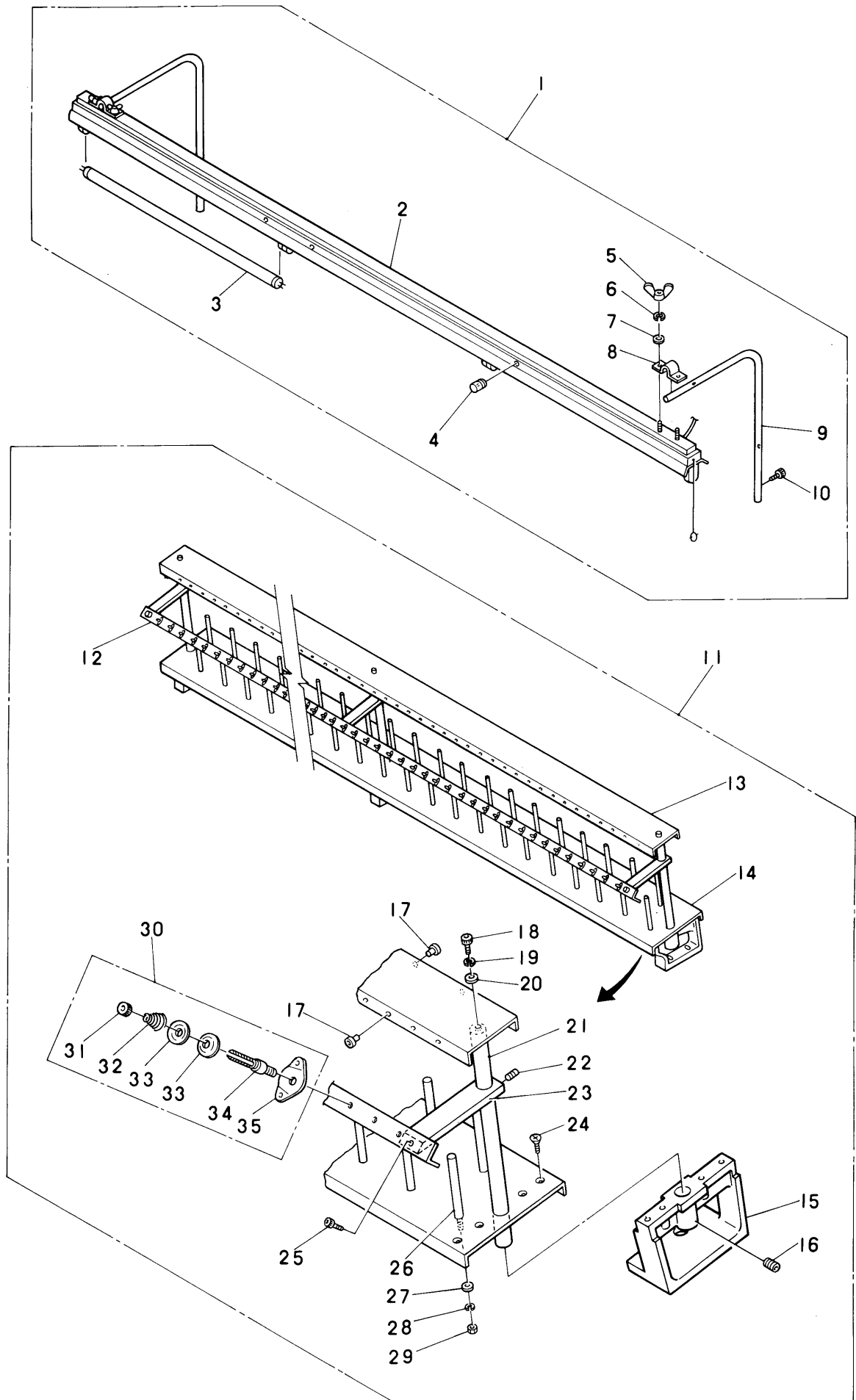


# ⑪ UNDERTHREAD STOP MOTION

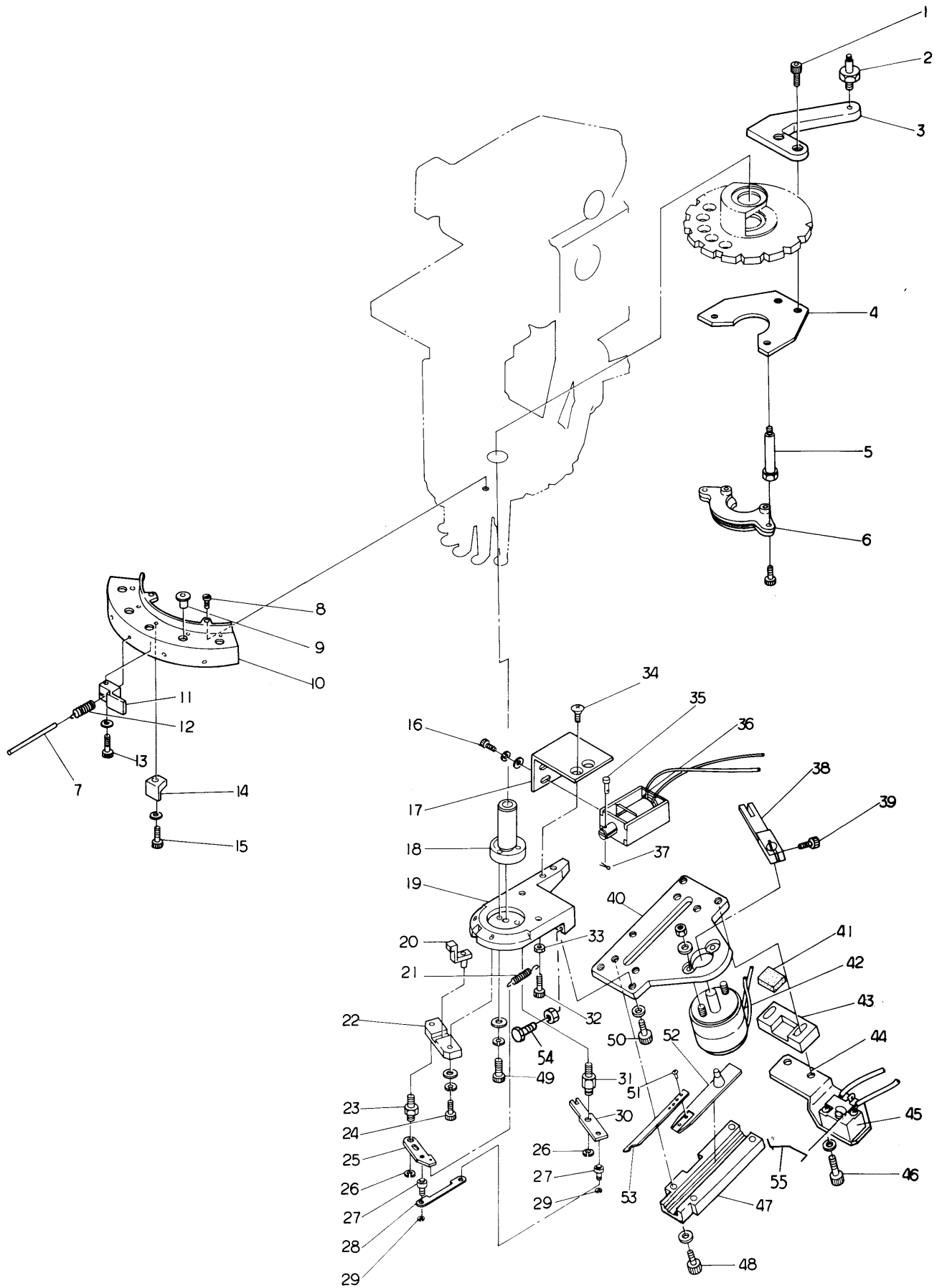


From the library of: Diamond Needle Corp





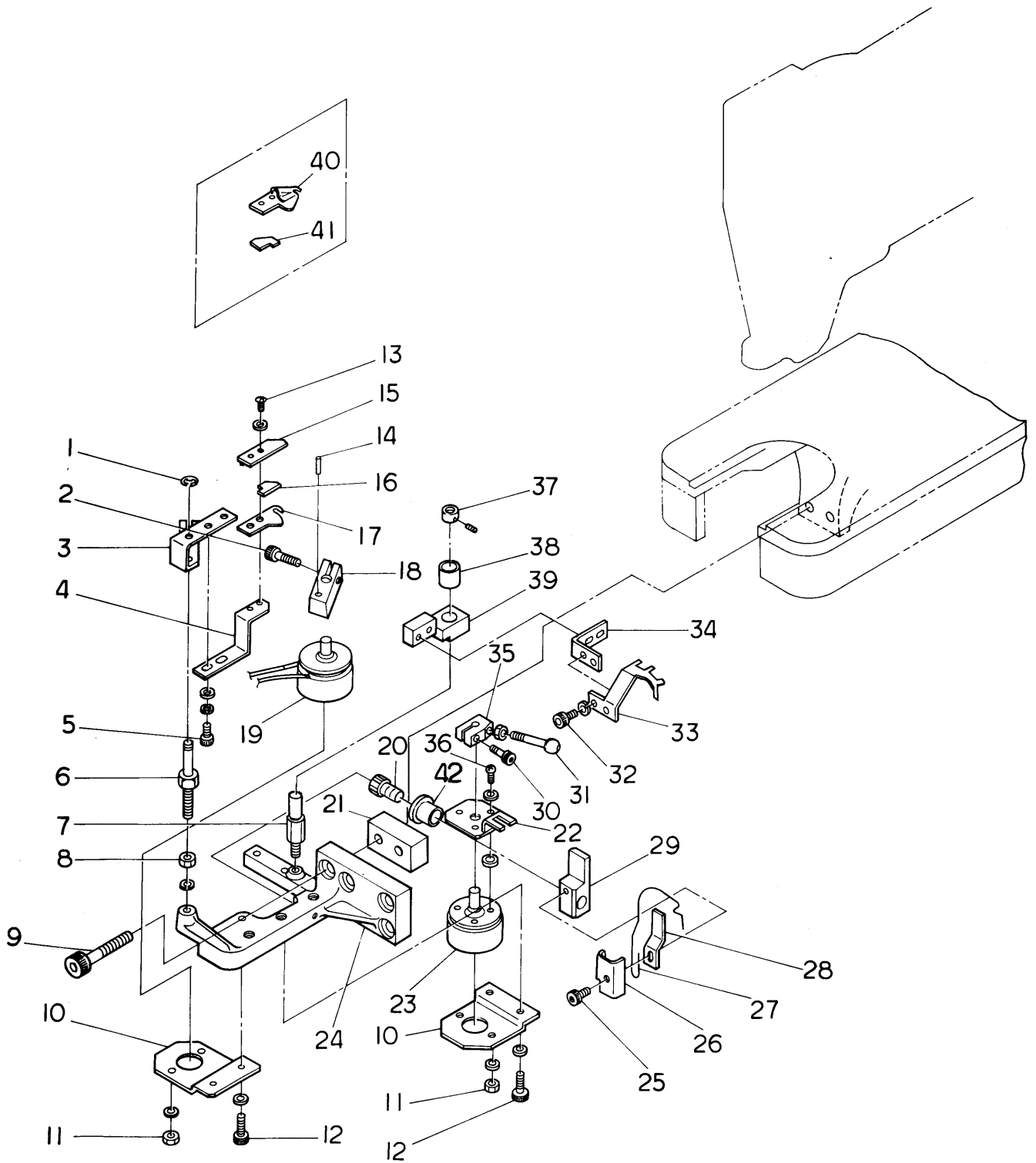




From the library of: Diamond Needle Corp

NO.	PARTS NO.	DESCRIPTION	REMARKS
1		SCREW M4	
2	2720H	ROTARY PLATE JOINT PIN A	
3	2709H	ROTARY BOARD LEVER	
4	2715C01	SUPPORTER	
5	2716C	THREAD HOLDER POST	
6	2772C	THREAD HOLDER CMP	
7	2731C	THREAD KEEP PIN FOR 5 NEEDLE	
	2731G	THREAD KEEP PIN FOR 7 NEEDLE	
8		SCREW SM9/64 40	
9	2358F	CERAMIC THREAD GUIDE	
10	2728C	THREAD END TRAP FOR 5 NEEDLE	
	2728G	THREAD END TRAP FOR 7 NEEDLE	
11	2730C	THREAD KEEP CLAMP	
12	2727C01	KEEP SPRING	
13		SCREW M3	
14	2729C01	THREAD KEEP BLOCK	
15		SCREW M3	
16		SCREW M3	
17	2719C	BRACKET FOR SOL PLUNGER	
18	2701C	NEEDLE BAR DRIVER SHAFT BUSH	
19	2722C01	FIXING BASE	
20	2765C	SLIDER CMP	
21	2740C01	LEVER SPRING	
22	2703C	SLIDE BASE	
23	2705C	LEVER PIN	
24		SCREW M3	
25	2706C	LEVER	
26		E RING 3	
27	2707C	ROD PIN	
28	2718C	PLATE ROD	
29		E RING 2	
30	2717C	SECOND LEVER	
31	2708C	SECOND LEVER PIN	
32		SCREW M3	
33		NUT M3	
34		SCREW M4	
35	2710C	SOLENOID PIN	
36	95604	KEEP SOLENOID TDS-K10SL	
37		DEVIDING PIN 0.8 L=6	
38	2723C01	THREAD KEEP LEVER	
39		SCREW M4	
40	2733C01	THREAD KEEP BASE	
41	2737C	STOP RUBBER	
42	95607	ROTARY SOLENOID 4ER67.5-34×3.8.9	
43	2736C	STOP BASE	





From the library of: Diamond Needle Corp



NO.	PARTS NO.	DESCRIPTION	REMARKS
1		E RING 2.5	
2		SCREW M4	
3	2744C	TRIMMING LEVER	
4	2745C	FIXING STAY	
5		SCREW M3	
6	2743C	LEVER PIN A	
7	2750C01	LEVER PIN B	
8		NUT M4	
9		SCREW M6	
10	2748C01	SOLENOID STAY	
11		NUT M3	
12		SCREW M3	
13		SCREW M2	
14		PIN 3	
15	2747C	GUIDE UPPER	
16	2793C	KNIFE	
17	2746C	GUIDE LOWER	
18	2749C	SOLENOID LEVER A	
19	95605	ROTARY SOLENOID 3EL25×4.5	
20	2767C	GRUB SCREW M4	
21	2742C	FIXING WASHER FOR 5 NEEDLE	
	2742G	FIXING WASHER FOR 7 NEEDLE	
22	2756C	SOLENOID LEVER C	
23	95606	ROTARY SOLENOID 3ER25×4.6.9	
24	2741C	THREAD TRIMMING FIXING BASE	
25		SCREW M3	
26	2766C	HOOK FIXING STAY	
27	2759C02	THREAD PULLING HOOK	
28	2761C	PLATE SPRING B	
29	2758C	THREAD PULLING LEVER	
30		SCREW M4	
31	2755C01	PIN	
32		SCREW M3	
33	2753C01	THREAD DEVIDING HOOK	
34	2752C	THREAD DEVIDING FIX STAY	
35	2754C	SOLENOID LEVER B	
36		SCREW M2.6	
37	2792C	COLLAR	
38		BUSH MB0608DU	
39	2751C	THREAD DEVIDING LEVER	
40	2773C	GUIDE	
41	2774C	KNIFE	
42	2757C	BUSH COLLAR	



